



Outstanding Conversions and Restorations Pub List

Using This List

This is the list of all pubs currently included as pubs that are Outstanding Conversion or Restorations.

The pubs are listed by county in alphabetical order, across all four regions of the UK. At the end are pubs that are listed for the OCR project but are currently recorded by CAMRA as closed with the expectation of reopening.

There are four categories of OCR pubs to denote the type or previous use of the building: Conversion; Restoration; New Build; Museum.

Each pub has a coloured star after its name in the pub list to indicate the type of pub it is:

★ Conversion

★ Restoration

★ New Build

★ Museum

The description of each pub highlights the main interior features that have led to its inclusion in the OCR list. Only pubs in which members of the public can have a drink are included; for example hotel bars open only to non-residents and museum pubs that do not serve alcohol are excluded.

Pubs whose layout, fixtures and/or fittings have been unaltered since before 1970 are not part of OCR and are included in CAMRA's National Inventory of Historic Interiors.

Photo on title page: Pitcher & Piano, Nottingham.

Contents

Introduction

Aberdeen & Grampian

Ayrshire & Arran

Cambridgeshire

Channel Islands - Guernsey

Cheshire

Cornwall

County Durham

Cumbria

Derbyshire

Devon/p>

Dorset

East Sussex

East Yorkshire

Edinburgh & The Lothians

Essex

Glamorgan

Gloucestershire & Bristol

Greater Glasgow & Clyde Valley

Greater London Central

Greater London East

Greater London North

Greater London South East

Greater London South West

Greater London West

Greater Manchester
Hampshire
Herefordshire
Hertfordshire
Kent
Lancashire
Leicestershire
Lincolnshire
Loch Lomond, Stirling & The Trossachs
Merseyside
Norfolk
North Yorkshire
North-East Wales
North-West Wales
Northamptonshire
Northern Ireland
Northumberland
Nottinghamshire
Oxfordshire
Shropshire
Somerset
South Yorkshire
Staffordshire
Suffolk
Surrey
Tayside

Tyne & Wear
West Midlands
West Yorkshire
Wiltshire
Worcestershire
Closed Pubs

Introduction

In recent years, large numbers of pubs have been restored and many created in buildings previously used for something else. There have also been new pubs built that are worthy of admiration and recognition. CAMRA is recording the best of these pubs and highlighting them for all to enjoy. The project identifies and promotes interiors of outstanding architectural or design quality in pubs that have been converted, restored or newly built.

Quality can derive either directly from the previous incarnation of the building or from the manner in which the interior has been adapted and fitted out for pub use or both, delivering an authentic pub experience. The purpose is to raise awareness and enjoyment of the best pub design of the last fifty years.

CAMRA runs a competition, the Pub Design Awards, to recognise the best in new and refurbished pub design each year. The paucity of awards to newly built pubs affirms how few new builds have significant design merit but those that do are worthy of celebration and are included here.

We also showcase pubs recreated in museums where visitors can enjoy a pint in an authentic setting.

CAMRA aims to inspire pub owners and others to pursue excellence when converting or restoring buildings for pub use, thereby establishing standards against which future conversions, restorations and new builds can be judged.

We welcome your feedback. If you have comments on pubs listed or want to nominate others, please do so saying why and send to: info@ocrpubs.camra.org.uk

Aberdeen & Grampian

Aberdeen

5 Castle Street, , Aberdeen, AB11 5BQ

Directions: East end of Union St

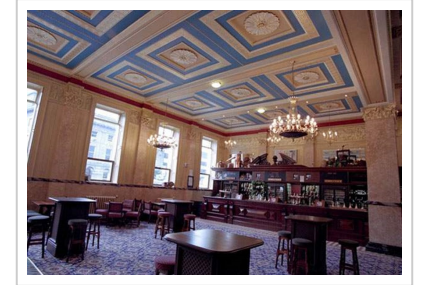
Tel: (01224) 621365

Email: p331@jdwetherspoon.co.uk

Website: <https://www.jdwetherspoon.com/pubs/all-pubs/scotland/aberdeen/the-archibald-simpson-aberdeen>

Archibald Simpson ★

A former bank of 1839 with a pillared Corinthian portico and 6ft terracotta statue of Ceres, the Roman goddess of plenty, above. The high-ceilinged banking hall, approached by a mosaic floor, is the main room with seating areas to the side. It has Corinthian pilasters, a gilt Parthenon-style frieze, superb ornamental plasterwork and a splendid timber and part-glazed screen creating a passage on the right. This Wetherspoon's is one of many monumental granite buildings in Aberdeen by local architect Archibald Simpson and is Grade A-listed.



Ayrshire & Arran

Ayr

8 Sandgate, , Ayr, KA7 1BH

Ayr

58A Sandgate, , Ayr, KA7 1BX

Directions: close to bus station

Tel: (01292) 880416

Email: p804@jdwetherspoon.co.uk

Website: <https://www.jdwetherspoon.com/pubs/all-pubs/scotland/south-ayrshire/the-west-kirk-ayr>

Billy Bridges Bar ★

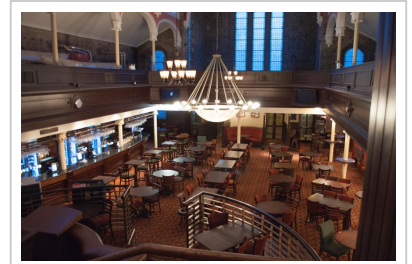
A basic bar that has been in the same family since 1949. It was refitted in 1980s using true craftsmen to make it look older. The quality of the fittings, such as wall panelling, delivers an impressive, convincing re-creation of a traditional Scottish urban bar from the late-Victorian/Edwardian period, done with style and panache.



Billy bridges bar

West Kirk ★

This former church was built in 1845 and closed in 1981. It retains the first-floor balcony, but it is not currently in use. There is a raised wooden pulpit where you can sit and admire the whole pub. Many original features have been retained by Wetherspoon's, such as fine stained-glass windows.



Cambridgeshire

Cambridge

8 Bene't Street, , Cambridge, CB2 3QN

Tel: (01223) 505020

Email: 3004@Greeneking.co.uk

Website:

<https://www.greeneking.co.uk/pubs/cambridgeshire/eagle>

Eagle ★

The pub reopened in 1992 after a period of closure, which is apt for what is probably the most famous pub in Cambridge. It is also one of the oldest with sale of beer on the site first recorded in 1353. It opened officially in 1667 as a coaching inn. The historic two-bar core remains with an expansion into neighbouring premises that has been sensitively executed, resulting in an impressive interior with an appearance of age, particularly the wood panelled room near the main entrance. The pub retains its galleried courtyard. The back room was a haunt of British, US and other airmen from nearby bases in WW2 and its ceiling is covered with their names, squadron numbers and graffiti, much of it burned into the paint with candles or cigarette lighters or applied with lipstick, in the hope they would never be forgotten. It is also the pub in which in 1953 Francis Crick announced that, with Rosalind Franklin and James Watson, he had worked out the structure of DNA. A window at the back of the pub has been kept open for 300 years because, legend has it, a fire upstairs resulted in the death of a young child who was unable to escape because the window couldn't be opened.

Eagle Courtyard 2

Image not found or type unknown

Eagle Courtyard 2

Cambridge

7 Prospect Row, , Cambridge, CB1 1DU
Tel: (01223) 368337
Email: contact@freepresscambridge.com
Website: <https://www.freepresscambridge.com>

Leighton Bromswold

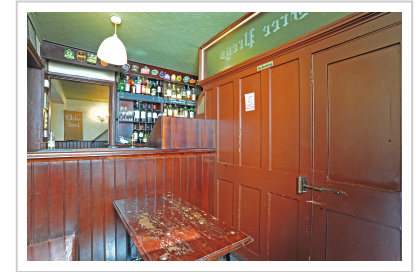
39 The Avenue, , Leighton Bromswold, PE28 5AW
Directions: 1 mile N of A14, W of Huntingdon
Tel: (01480) 271722
Email: contact@thegreenmanleightonbromswold.com
Website: <https://www.thegreenmanleightonbromswold.com/>

March

Dartford Road, , March, PE15 8AQ
Tel: (01354) 602980
Email: p5983@jdwetherspoon.co.uk
Website: <http://www.jdwetherspoon.co.uk/home/pubs/the-hippodrome-march>

Free Press ★

A traditional backstreet pub near the heart of Cambridge. Most of the fittings are from the 1970s but it is a faithful reproduction, making a small pub with exceptional character. The tiny snug is original, measuring 6ft by 5ft. The rest closely resembles the old pub with only the loss of a partition that created the off-sales, and the small right-hand baramalgamated with a sitting room to double its size. The publicbar is centred around a coal fire. There is bench seating outfront and a walled garden at the back.



Green Man ★

The pub is the focus of a small village and following restoration reflects the character of its rural setting, helped by a real fire in winter. The interior has been impressively worked with plenty of wood throughout - the bar counter and bar back, the flooring and wall panelling. The judicious use of mirrors, glazing and ornamentation adds to atmosphere and discrete drinking areas give a sense of times past.

Bar

Image not found or type unknown

Bar

Hippodrome ★

Originally a cinema which opened in 1929, it became a bingo hall that reopened in 2011 after a major refurbishment by Wetherspoon's with little alteration of Art Deco features including the circle, moulded box fronts, a 32 feet wide proscenium arch and a 24 feet deep stage. Vintage cinema posters adorn the walls and a large work of art catches the eye above the bar. Other interesting artefacts include an original process camera, film cans and a gallery of local figures in the balcony overlooking the bar, including Statler and Waldorf from The Muppet Show. Overall the striking interior is a strong homage to its previous use. The pub serves real ales and ciders and meals.

Channel Islands - Guernsey

St Peter Port

Castle Pier, , St Peter Port, GY1 1AN

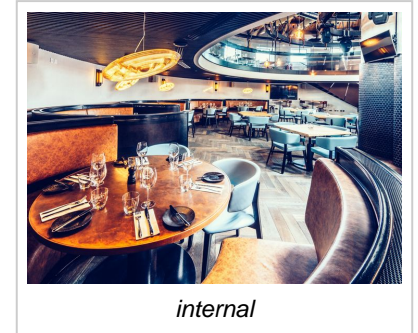
Tel: (01481) 712123

Email: info@slaughterhouse.gg

Website: <https://www.slaughterhouse.gg/>

Slaughterhouse ★

This pub is modelled on its origins and is in a superlative location within the harbour. It is a striking structure illuminated at high level by square windows with three overhead rails with hooks from which carcasses were suspended and moved around the building. The cobbled courtyard is where beasts entered with their one-way tickets. Various other bits of equipment survive such as water trough, furnace, tethering rings and a building where dog food was made. It is a distinctive environment in which to enjoy real ale or a meal.



Cheshire

Chester

52-54 Lower Bridge Street, , Chester, CH1 1RU

Tel: (01244) 340999

Email: drink@the-tap.co.uk

Website: <https://www.spittingfeathers.co.uk/the-brewery-tap>

Cholmondeley

Wrenbury Road, , Cholmondeley, SY14 8HN

Directions: Near Cholmondeley Castle, at junction of A49 and Wrenbury Road.

Tel: (01829) 720300

Email: info@cholmondeleyarms.co.uk

Website: <http://www.cholmondeleyarms.co.uk>

Brewery Tap ★

A stunning former Jacobean timber-framed banqueting hall, in part of a Grade II*-listed building. Stone floors, high ceilings and tapestries create a terrific ambience. Excellent use of appropriate fixtures, furniture and wall decorations.



Cholmondeley Arms ★

Built in 1862 as an elementary school for 200 children, the school closed in 1986 and was converted to a pub, becoming the first public house on the Cholmondeley Estate for over a century. The conversion is an interesting and pleasing development of an unusual building, by not altering the cruciform layout. Wooden braces hold up the high-ceilinged interior which has three drinking areas with bare floorboards split by wide brick arches; there is also a tiny snug. Most walls are of exposed brick and there are log fires to enhance the quirky design. The bar back has a bottom section formed from a piece of furniture with sets of drawers and on top is what looks like a Victorian mirrored bar back that nearly reaches the high ceiling. There is a heavily carved bar counter.

Nantwich

33 London Road, , Nantwich, CW5 6LJ

Directions: On London Road, opp Hastings Road.

Tel: (01270) 611497

Email: theleopasdpubnantwich@outlook.com

Website: <http://leopardnantwich.co.uk>

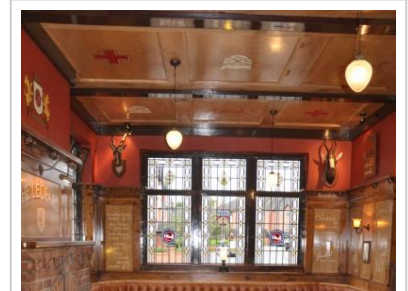
Runcorn

65a, South Parade, Weston Point, , Runcorn, WA7 4HS

Tel: None

Leopard ★

The Leopard was built on the site of a previous tavern in 1834, the name recognising the animal as the ultimate trophy for Victorian big game hunters who had to stalk their targets on foot at night. It was rebuilt by Taylor Walker in the style of a hunting lodge in 1936 and refurbished by current owners Joules in 2012, retaining its old leaded windows. A further refurbishment in 2023 has created a new room with Post Office memorabilia and an extensive conservatory to extend capacity. It is open plan with several distinct drinking areas; the former tap room is now styled as a sports bar. Varnished wood panelling, brickwork and grand fireplaces predominate. Stained glasswork depicts the big five game animals and there are antique sporting trophies and African shield designs on the walls, design flourishes that pay homage to the pub's roots. There are real ales and ciders and meals.



Leopard bar window

Weaver Hotel ★

Rebuilt in 1908 this multi-roomed pub was impressively refurbished and won a CAMRA Conservation Award. It is a marvellous building with some showcase rooms and windows. Tiling, possibly some fixed seating and fireplaces are original. The latter appear Edwardian, in cast iron with wood surrounds and a mirror in the mantelpiece. The bar fittings including the screened serveries are replacements. The letters A to E on the doors of the rooms are a licensing requirement to indicate the public rooms. A vestibule has stained and leaded glass. The passage has a modern but splendid dado of tiles in browns with grapes motifs. The gents has an old tiled floor and 1930s tiled walls. The pub is now a Sam Smiths outlet that does not serve real ale or meals.



Public Bar

Sandbach

Crown Bank/Hawk Street, , Sandbach, CW11 1DB

Directions: just off the cobbled square, near to the Saxon Crosses

Tel: (01270) 484981

Email: thelowerchequersandbach@outlook.com

Website: <http://www.joulesbrewery.co.uk/our-taphouses/our-pub-list/lower-chequer>

Sandbach

High Street, , Sandbach, CW11 1AL

Directions: Opp St. Mary's Church on High Street

Tel: (01270) 758170

Email: old.hall@brunningandprice.co.uk

Website: <http://www.brunningandprice.co.uk/oldhall/>

Listed Status: I

Lower Chequer ★

Grade II-listed building dating from 1570 and the oldest building in Sandbach, much altered over the years but having been a pub from long ago when it used to quench the thirst of congregants from the church next door. It was later a staging post for long distance coaches on the main route from Manchester to London and the cellar still has the stabling and a mounting block just outside. The name comes from the chequered board used to help educate customers to count their money, when landlords were also money lenders. Joules refurbished in 2014, the multi-roomed layout retaining its character, with two bars having a range of wood panelling and floors restored to their old surfaces of wood and tiles. Walls are adorned with stuffed animals and a few antique animal trophies. There are real ales and meals but the pub is currently open only on Fridays, Saturdays and Sundays.



Lower Chequer interior

Old Hall ★

This mightily impressive Grade I-listed hall dating from 1656 was once the residence of the lords of the manor of Sandbach. It has been described as a good example of Elizabethan architecture and has wattle and daub walls. It became an inn in C18 with a coaching arch to the right. It has been brought back to life by Brunning & Price, carefully restored, tastefully refurbished and extended, retaining most of its original fittings. There are two wonderful Jacobean carved fireplaces. Many historical pictures on the walls. A range of real ales, real cider in the summer and meals.



Sutton

Bullocks Lane, , Sutton, SK11 0HE

Tel: (01260) 253211

Email: sutton.hall@brunningandprice.co.uk

Website: <http://www.brunningandprice.co.uk/suttonhall/>

Listed Status: II

Sutton Hall ★

A Brunning & Price conversion of a stunning C17 manor house, home to the earls of Lucan. More like a stately home, it has a snug, library and seven other rooms, mainly for dining. Original features are well integrated. Drinkers are welcome to enjoy a range of real ales. Terraces and gardens abound outside. Grade II-listed.



Cornwall

Falmouth

3-4 Bells Court, , Falmouth, TR11 3AZ

Directions: up a side-alley off the shopping st (next to Santander)

Tel: (01326) 618474

Email: books@beerwolfbooks.com

Website: <http://www.beerwolfbooks.com>

Truro

7 Quay Street, , Truro, TR1 2HD

Directions: near the bus station

Tel: (01872) 719462

Email: OAH@cornwallciderco.co.uk

Website: <https://theoldalehousetruro.co.uk>

Beerwolf Books ★

Hard to say if this is a pub with books or a bookshop with beer. In a side-alley, up a flight of stairs to a former maritime store loft with rafters, previously the Working Men's Club. The interior is spacious with wooden floors throughout. One half is the bar with many real ales and ciders. The other half has second-hand and remaindered books, displayed in bookshop-style. Tables and chairs are scattered throughout, so you can drink or browse or do both. Posters and old photographs decorate the walls. No food, but you may bring your own.



Main bar area

Old Ale House ★

An ornate frontage to this former draper's shop gives way to the atmospheric open-plan interior of Skinner's brewery tap. The ground level bar features wooden flooring, beams, uprights and furnishings, with old artefacts adding character. Free monkey nuts are available from old wooden barrels, the empty shells are freely scattered on the floor. A large range of real ales and ciders but no food.



Main bar from the front

County Durham

Beamish

Beamish, The Living Museum of the North, , Beamish, DH9 0RG

Directions: Follow signs for Beamish then catch the tram.

Tel: (0191) 370 4000

Email: museum@beamish.org.uk

Website: <http://www.beamish.org.uk/the-town/>

Sun Inn ★

Situated in The Edwardian Town area of Beamish Open Air Museum, The Sun was moved brick-by-brick from Bishop Auckland. It has a bar and a snug reproducing the era. An entry fee is payable to enter the museum grounds and to visit the pub. It is worth it for an authentic and delightful representation of an old pub. Open only during museum hours and not in the evenings.



Exterior

Cumbria

Carlisle

Victoria Road, , Carlisle, CA1 2UE

Tel: (01228) 402165

Listed Status: II

Cockermouth

14 Market Place, , Cockermouth, CA13 9NQ

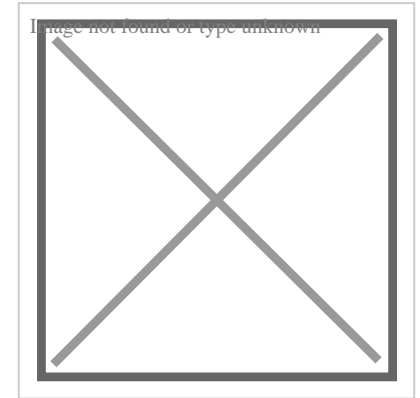
Tel: (01900) 829904

Email: castlebar14@hotmail.co.uk

Website: <https://castlebarcockermouth.co.uk>

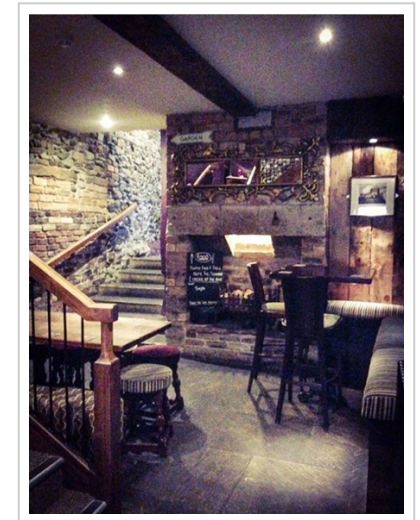
Magpie Inn ★

The interior of the Magpie is a replica. Built in 1933, this is one of many Carlisle pubs designed for the State Management Scheme, that is they were owned and run by the Government. In 2010 it was restored to how it was when built with quality bar fittings and partitions. Toilets, windows and a tiled floor are mostly original. The pub won the CAMRA Best Refurbishment Award in 2011 and is Grade II listed.



Castle Bar ★

This iconic pub won a CAMRA design award in 2009 for refurbishment, reflecting an impressive rebuilding. Work to convert a dilapidated shell started in 2007, preserving parts of a facade dating to C17 and older foundations of what was probably a merchant's house originally. Historic features have been conserved in several rooms over three floors. The building is Grade II-listed. There is a courtyard garden.



Keswick

2 Bank St, , Keswick, CA12 5JY

Tel: (017687) 73561

Email: P6890@jdwetherspoon.co.uk

Website: <https://www.jdwetherspoon.com/pubs/the-chief-justice-of-the-common-pleas-keswick>

Penrith

Great Dockray, , Penrith, CA11 7DE

Tel: (01768) 210676

Email: management@dockrayhall.com

Website: <https://dockrayhall.com/>

Listed Status: I

Chief Justice of the Common Pleas ★

A former magistrates' court and police station well converted by Wetherspoon's. It remained in use until 2000, built in early 1900s on the site of a workhouse founded in the will of an eminent lawyer who became Chief Justice of the Common Pleas in the 1600s. Excellent re-use of historic space retaining interesting features like the cells (now snugs) and the dock. A triumph. There is real ale and meals. Grade II-listed.



Dockray Hall ★

This is a magnificent place, Grade I-listed, that has been an inn since early C18. The ambience comes from its time as a grand house for the gentry and it is said that King Richard III stayed here. Original features include three large fireplaces and extensive wood panelling. There are two bars with counters that are probably inter-war. The pub was refurbished recently. Meals and real ale are served. Note it is closed on Mondays, Tuesdays and Wednesdays.



Main Bar

Derbyshire

Derby

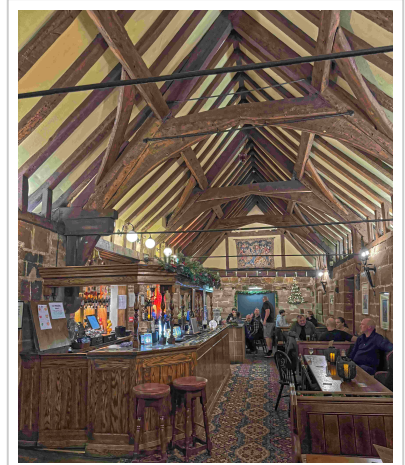
Darley Street, Darley Abbey, Derby, DE22 1DX
Tel: (01332) 558297
Email: abbeyinnderby@gmail.com
Listed Status: II*

Derby

1 Railway Terrace, , Derby, DE1 2RU
Tel: (01332) 290677
Email: brunswickderby@aol.com
Website: <https://www.brunswickderby.co.uk/>
Listed Status: II

Abbey ★

Originally an outbuilding to the abbey converted to a pub by Sam Smith's. It oozes character with contrasting rooms on two levels. The Undercroft Bar has an uneven, tiled floor with a magnificent open fire. The upstairs bar features a vaulted ceiling with fine, exposed roof timbers. It is a scheduled monument and not to be missed in this attractive conservation area.



Upstairs bar

Brunswick Inn ★

Built in 1841 and the oldest purpose-built railway pub in the world, Grade II-listed. It is part of the original Midland Railway Village. Carefully restored, it works brilliantly as a pub with a variety of attractive drinking areas. It is owned by Everards, while an on-site brewery is managed separately.



Brunswick settles

Derby

28-32 Iron Gate, Cathedral Quarter, , Derby, DE1 3GL

Tel: (01332) 207591

Website: <https://www.jdwetherspoon.com/pubs/all-pubs/england/derbyshire/the-standing-order-derby>

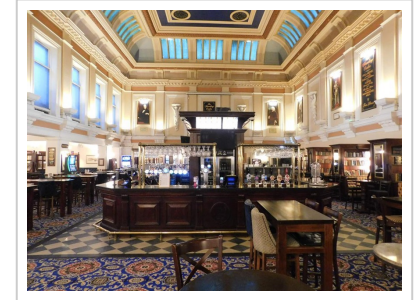
Holbrook

38 Chapel Street, , Holbrook, DE56 0TQ

Tel: (01332) 780301

Standing Order ★

A Wetherspoon's pub, this is a sympathetic conversion of a former grand banking hall. It was built as the Crompton & Evans Union Bank around 1912, later passing to Nat West. An imposing Grade II-listed building with many fine features retained and pub fittings blending in well.



Dead Poets Inn ★

This pub was built in 1800 and a superb restoration in 1998 turned an ordinary carpeted pub into a beautiful, old-world inn of character with several rooms or drinking areas. Around the servery are the right hand bar, left hand bar and at front a tiny alcove with service from what is not much larger than a hatch. These areas have original stone walls and flagstone floors from an old mill. On the right is the main bar area, that is flagstone-floored with low ceilings, four high-backed settles forming two bays and a large stone fireplace, flanked by a cosy snug with a diamond black and red quarry-tiled floor, scrubbed tables, two settles which have lift-up cupboard seats and a wood-burning stove. The overall effect is homely and cosy. At the rear is a conservatory. The pub serves real ales and ciders and provides lunches.



Dead Poets Inn snug

Long Eaton

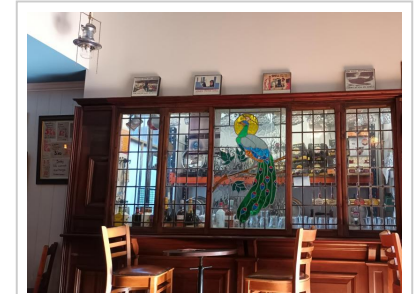
22 High Street, , Long Eaton, NG10 1LL

Tel: 07809 627286

Email: rowellsdrinkingemporium@gmail.com

Rowells Drinking Emporium ★

A spacious micro pub in a former drapers that sold everything from curtains to underwear and had been run by three generations of the same family for more than 100 years. It retains many of the shop's original features, such as wooden shelving and cabinets and one of the shop's counters is the bar top. Everything else is made from reclaimed, recycled materials including the floor and the cupboards. The pub is adorned with an assortment of nostalgic items such as old street lamps, a wooden washing mangle and a hobby horse amid interesting old furniture, good woodwork and stained glass. The effect is cosy and welcoming, despite the constraints of the shop space. Real ales and ciders are served but there are no meals.



Rowells interior

Devon

Ashburton

26 West Street, , Ashburton, TQ13 7DU

Directions: On main road through the centre of Ashburton opp church

Tel: (01364) 652013

Email: bookings@oldexeterinn.com

Website: <http://oldexeterinn.com>

Listed Status: II

Old Exeter Inn ★

The oldest pub in Ashburton, dating from the late medieval period, remodelled in the early C18 and Grade II listed. It was built to house the builders of the church opposite but has been an inn since its early days. It is reputed that Sir Francis Drake visited regularly and that Sir Walter Raleigh was arrested here in July 1603 before being imprisoned in the Tower of London. Painstaking restorations are sympathetic to the heritage of the building, retaining some of its ancient woodwork, and transforming it into a pub of five small dimly-lit rooms of character. There are drinking areas either side of the entrance hallway and the main bar is L-shaped, rustic and wood-panelled. Behind the bar are the old millstones, in what was one of two genuine, old stone fireplaces, both still present. To the rear are a snug, containing the beer engine that was in the bar, a curved high-backed settle forming a wall and casks on stillage. A flagstone-floored rambling passage leads to a small walled garden.



wood panelling

Exeter

, Canal Banks, Exeter, EX2 6LT

Directions: Road access from Marsh Barton Trading Estate

Tel: (01392) 256947

Email: doublelocks@youngs.co.uk

Website: <http://www.doublelocks.com>

Double Locks (Canal Banks) ★

In an idyllic location on the Exeter Ship Canal, this red brick house of Dutch influence has functioned as a lock keeper's cottage and an inn at the same time. The locks themselves are claimed to be the longest in the UK. The house/inn was rebuilt in the 1820s and is now a multi-roomed pub of character warmed by log fires when needed. There is a large garden, often a focus for events through the year. Grade II-listed.



Exeter

38 South Street, , Exeter, EX1 1ED

Directions: near bottom of South St

Tel: (01392) 454250

Email: p1040@jdwwetherspoon.co.uk

Website: <https://www.jdwetherspoon.com/pubs/georges-meeting-house-exeter/>

Listed Status: I

Exeter

New North Road, , Exeter, EX4 4AH

Tel: (01392) 434050

Email: p253@jdwwetherspoon.co.uk

Website: <https://www.jdwetherspoon.com/pubs/the-imperial-exeter/>

Listed Status: II*

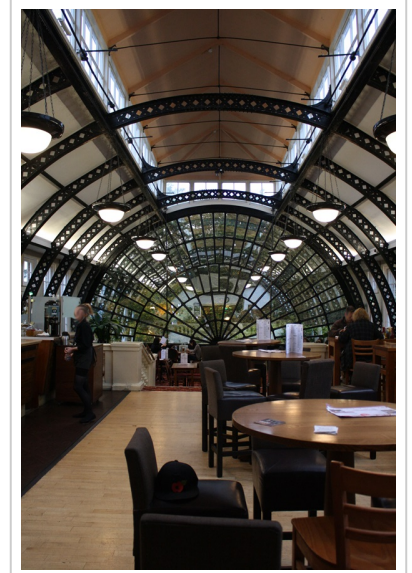
George's Meeting House ★

This Wetherspoon's pub is a 1760 former Unitarian chapel and is Grade I-listed for its unaltered exterior and interior features. It was named after King George III who came to the throne in the year it was built. There are lovely stained-glass windows, upstairs galleries and a pulpit.



Imperial ★

Grade II*-listed, dating from around 1810 and originally a house. It was converted into a hotel and is now a large Wetherspoon's. Its attractive architecture, spectacular conservatory and orangery are still here to be enjoyed. There is large garden.



Exeter

202 High Street, , Exeter, EX4 3EB

Directions: beside the Guildhall

Tel: (01392) 706013

Email: info@turksheadexeter.com

Website: <http://turksheadexeter.com>

Turks Head ★

Located in the city centre, this is one of the region's oldest pubs and the building is Grade II listed. It is said to have been a favourite of Charles Dickens (one of many), who modelled a character in *The Pickwick Papers* on a member of staff. Having spent time as a restaurant, it is now restored to something approaching its former glory, with ales brewed onsite. It occupies a long, narrow 'burgage plot' that is said to have housed a pub for several centuries and, with the exception of occasional modern touches that are a bold contrast with the traditional elements, has been given an historic feel through use of dark wood panelling. There is an outdoor drinking area at first floor level.



Turks Head exterior

Dorset

Dorchester

12 Queen Mother Square, Poundbury, Dorchester, DT1 3BW

Tel: (01305) 757569

Email: duchess.cornwall@hall-woodhouse.co.uk

Website: <https://www.duchessofcornwall.co.uk/>

Lyme Regis

1 Bridge Street, , Lyme Regis, DT7 3QA

Tel: (01297) 443157

Email: info@thepilotboat.co.uk

Website: <https://thepilotboat.co.uk/>

Listed Status: II

Duchess of Cornwall

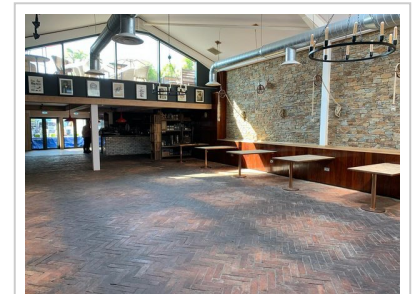
Built in 2016 by Hall & Woodhouse and an impressive piece of work. Elements such as the staircase and the entrance hall, both constructed from a copper formerly used at King & Barnes brewery, are striking. The mezzanine area is more cosy.



Duchess of Cornwall entrance

Pilot Boat Inn ★

A subtle and imaginative refit of a smallish pub in which nothing has been preserved from the original pub, save the Grade II-listed exterior. Palmers has created a new establishment which offers both traditional drinking and a restaurant style. It has been tastefully renovated to provide a large main bar opening out to a courtyard and overlooked by a roof terrace. There are good quality materials and finishes, such as lovely tiles. The bar counter is especially striking. A choice of meals and real ales and there is accommodation.



internal

East Sussex

Bexhill on Sea

27 Sea Road, , Bexhill on Sea, TN40 1EE
Tel: (01424) 602778
Email: info@brickmakersalehouse.co.uk
Website: <https://brickmakersalehouse.co.uk>

Eastbourne

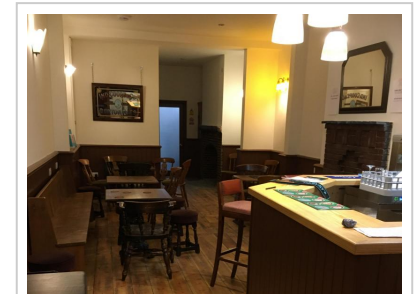
Star Road, Old Town, Eastbourne, BN21 1NB
Tel: (01323) 731158
Email: team@therainboweastbourne.co.uk
Website: <https://www.therainboweastbourne.co.uk/>

Hove

Hangleton Valley Drive, Hangleton, Hove, BN3 8AN
Tel: (01273) 413266
Email: hangletonmanor.hove@hall-woodhouse.co.uk
Website: <http://www.thehangletonmanor.co.uk>
Listed Status: II*

Brickmaker's Alehouse ★

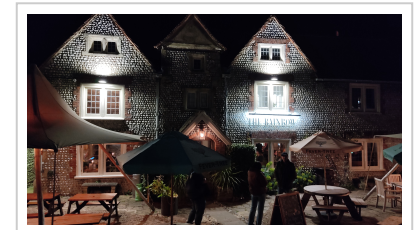
A micropub close to the town centre, seafront and transport. Real ales and ciders are dispensed by gravity, with other drinks available. It won a CAMRA Pub Design Award for its conversion of a former shop and showroom of a brick and tile manufacturer. It is a super job that makes the most of important old features such as a fireplace and a mosaic at the entrance advertising the company's wares. The result is a pub that has the feel of an old alehouse.



brickmakers-alehouse counter

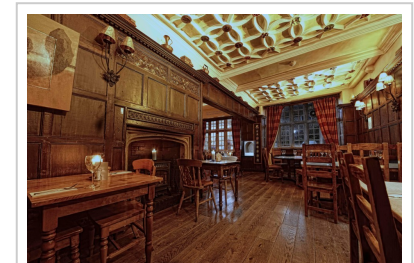
Rainbow ★

In Eastbourne's Old Town, this C16 former Hundred Court House is now a three-roomed pub. Grade II-listed, it has been refronted with cobbles. There is a minstrel gallery in the high-ceilinged left-hand room, ancient stone fireplaces and oak fielded panelling on the walls in the middle bar. There is a large garden.



Hangleton Manor ★

An impressive conversion of a lovely building constructed in C16 and for many years a manor house and farm. In the interwar period it was a hotel, but fell into disuse in the 1960s and was under threat of demolition before it was rescued and converted into a pub and restaurant in the 1970s. Dark wood panelling and wooden ceiling beams in the dining room and bar may be very old in places. The attractive wooden counter was installed at the time of conversion and the bar has a stone-flagged floor and is decorated in traditional style. Operated by Hall & Woodhouse, there are real ales and meals.



Interior

Newhaven

Bridge Street, , Newhaven, BN9 9PH

Tel: (01273) 525600

Email: thebridgenewhaven@outlook.com

Website: <https://www.thebridgenewhaven.co.uk/>

Bridge Inn ★

Built in C17 and Grade II listed. the pub re-opened after a long closure and then refurbishment. The interior has modern, clean-cut decor whilst maintaining an unusual, semi-partitioned layout. There is bench seating and attractive stained glass. The pub's main claim to fame was that it hosted King Louis Philippe and Queen Marie Amelie during their flight from France following the revolution of 1848. The pub offers rooms and serves real ale.

bridge inn interior

Image not found or type unknown

bridge inn interior

East Yorkshire

Bridlington

62 High Street, , Bridlington, YO16 4QA
Tel: 07468 217848

Goodmanham

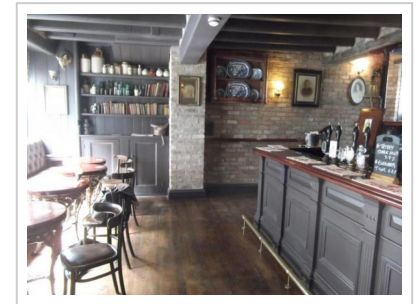
Main Street, , Goodmanham, YO43 3JA
Tel: (01430) 873849

Hull

32 Scale Lane, , Hull, HU1 1LF
Tel: 07808 832295

Board Inn ★

Refurbished with dark wood, distinct drinking areas and a variety of seating to look convincingly old. This is a split-level pub with numerous rooms, including three upstairs, with period furniture and historic photos on some bare brick walls. There are four real fires. The old stabling buildings to the rear have been converted to a craft ale bar. Grade II-listed.



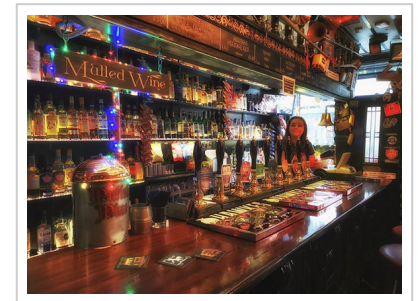
Goodmanham Arms ★

This village pub is popular with walkers. There is a small seating area outside and Inside the pub has been made to look little-altered with three small rooms and quarry-tiled floors. It is cosy with log fires in winter and no music, TV or other distractions. On Friday evenings there will probably be a cooking pot hanging over the main fireplace. A small vintage motorcycle museum is accessible from within the pub. There are real ales from the area and from the on-site brewery. Meals at lunchtimes.



Wm Hawkes ★

Based in the premises of a former gunmaker's shop, this little gem of a place has been converted in such a way as to make it look as though it has been around since Victorian times. The mahogany bar counter was acquired from other Hull pubs. Small and cosy with much bric-a-brac, it's a great place to enjoy a pint of cask ale. There is no food.



Market Weighton

High Street, , Market Weighton, YO43 3AH

Tel: (01430) 872214

Email: thelondesborougharms@outlook.com

Website: <https://www.thelondesborougharms.com>

Londesborough Arms ★

The large Grade II-listed Georgian town house dates from 1780s. The only original feature is the staircase. A polished mahogany bar back and ceramic counter are excellent reproductions made for this pub. The smaller bar has many old features including an impressive mural on the ceiling. There is wood panelling and three open fires. There are real ales, meals and accommodation. Late opening Monday to Wednesday.



Edinburgh & The Lothians

Edinburgh

80 West Bow, , Edinburgh, EH1 2HH
Directions: Old Town, off Grassmarket
Tel: (0131) 226 7667
Website: <http://www.thebowbar.co.uk>

Edinburgh

31 Lothian Road, , Edinburgh, EH1 2DJ
Directions: W edge of centre
Tel: (0131) 656 0752
Website: <https://www.jdwetherspoon.com/pubs/the-caley-picture-house-edinburgh>

Edinburgh

115 Broughton Street, , Edinburgh, EH1 3RZ
Directions: E edge of New Town
Tel: (0131) 556 3132
Email: broughton@caskandbarrelbars.co.uk
Website: <https://www.caskandbarrelbroughton.co.uk>

Bow Bar ★

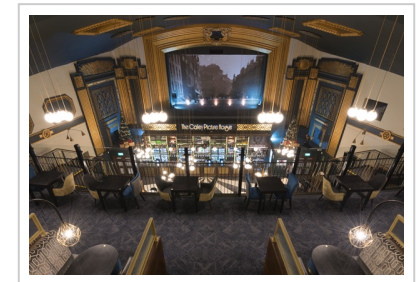
A faithful re-creation of a traditional Scottish one-roomed alehouse from what was a run-down pub in a tenement building. Grade C-listed. The genuinely old items are the brewery and whisky mirrors but all bar fittings are of highest quality. A classic example of how to do it. The superb gantry does justice to an award-winning selection of single malt whiskies, as well as ales served from traditional Scottish fonts.



Exterior

Caley Picture House ★

This is a stunning Wetherspoon renovation and conversion of a Grade B-listed cinema, which opened in 1923 and expanded to a capacity of 1900 in 1928. The main bar has a superb screen-style backdrop and is complemented by a smaller bar up in the 'gods', complete with plush cinema-style seating.



Cask & Barrel ★

In the base of a C19 curved Grade C-listed tenement converted to a pub in 1992. It is a characterful evocation of a traditional single room Edinburgh bar. The imposing horseshoe servery has an impressive gantry. There is an ornate ceiling cornice and a collection of brewery mirrors and framed prints. Bare floorboards and in some places barrels serve as tables.



Edinburgh

24-26 West Preston Street, , Edinburgh, EH8 9PZ

Directions: 1m S of centre

Tel: (0131) 667 0856

Email: southside@caskandbarrelbars.co.uk

Website: <http://www.caskandbarrelsouthside.co.uk>

Edinburgh

1-3 Cumberland St., , Edinburgh, EH3 6RT

Directions: New Town

Tel: (0131) 558 3134

Email: enquiries@cumberlandbar.co.uk

Website: <http://www.cumberlandbar.co.uk>

Edinburgh

14 George Street, , Edinburgh, EH2 2PF

Tel: (0131) 624 8624

Email: sales@thedomeedinburgh.com

Website: <http://www.thedomeedinburgh.com>

Listed Status: A

Cask & Barrel (Southside) ★

Re-creation of a traditional Scottish bar that opened in 2010 at the base of a tenement building. The single room, with windows front and back, has a horseshoe-shaped bar and an impressive dark wood gantry. The high ceiling has a good cornice. Lots of historic brewery and distillery mirrors, framed advertisements and old photos. Also has a small room in the building next door.



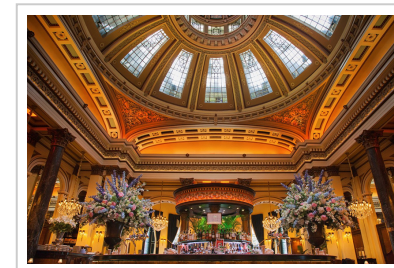
Cumberland Bar ★

An elegant, traditional re-created pub with a notable bar counter, in part of a Grade A-listed building. Exquisite brewery mirrors hang beside decorative and illustrative posters. The corridor between the front and the cosy drinking area at the back is flanked by a small snug and another side room. Half-height wood panelling is enhanced by dark green leather seating.



Dome ★

Behind an imposing columned facade is a fabulous 1840s Grade A-listed building. At the rear of the square staircase and hall lobby, also embellished with columns, is the former banking hall in the style of a Graeco-Roman temple with a marble mosaic floor, arched ceilings and a mightily impressive coffered central dome. A magnificent conversion offering lots of different areas in which to enjoy the splendour.



Edinburgh

39 Jamaica Street West, , Edinburgh, EH3 6HF

Directions: New Town, off India St. 0.4m N of centre

Tel: (0131) 225 1858

Email: simonkaysbar@gmail.com

Website: <https://www.kaysbar.uk/>

Edinburgh

44a Constitution Street, Leith, Edinburgh, EH6 6RS

Tel: (0131) 629 7215

Email: info@noblesbarleith.co.uk

Website: <http://www.noblesbarleith.co.uk>

Edinburgh

398 Easter Road, , Edinburgh, EH6 8HT

Tel: (0131) 554 0271

Email: perseverebar.edinburgh@gmail.com

Kay's Bar ★

Built in 1814 as a cottage, this wee pub operated as a wine merchant's shop for 150 years. It was converted to a cosy and convivial pub in the 1970s, retaining many features from its retail days. It is decorated with whisky barrels and specialises in malt whisky. It has a public bar and a small panelled snug called the Library.



Nobles ★

A large pub with a superb Victorian interior and interesting facade, both restored to former glory. The sizeable front stained-glass windows may yet be restored, but the smaller panes and internal panels remain. An impressive job.



Persevere ★

This large, single-roomed pub is the result of an elaborate 1980s refit to re-create a Victorian interior. There is a magnificent island bar with a superb gantry, a vestibule, seating bays with splendid green leather banquette seating and late C19 murals on the walls of bygone Leith, both inside and out. A screen across the centre of the interior has three sections with the one over the servery containing a clock. Ceiling details are picked out in gold.



Edinburgh

62-66 George St., , Edinburgh, EH2 2LR

Directions: city centre

Tel: (0131) 225 4460

Website: <https://www.jdwetherspoon.com/pubs/the-standing-order-edinburgh>

Edinburgh

25-27 Greenside Place, , Edinburgh, EH1 3AA

Tel: (0131) 557 2142

Email: info@thetheatreroyalbar.co.uk

Website: <http://www.theatreroyalbar.co.uk>

Edinburgh

182-184 Morrison St., , Edinburgh, EH3 8EB

Directions: W edge of centre

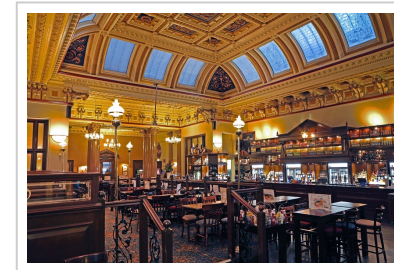
Tel: (0131) 228 5700

Email: info@thomsonsbaredinburgh.co.uk

Website: <http://www.thomsonsbaredinburgh.co.uk>

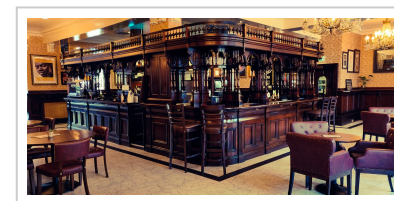
Standing Order ★

What was once the Union Bank in the 1870s is now owned by Wetherspoon's and forms one of the company's most imposing outlets. The top-lit rectangular banking hall forms the mainbar, which has a superb high ceiling and polished granite pillars. Subsidiary offices provide a series of smaller spaces, one of which contains a mighty safe. A vast but interesting building that is Grade A-listed.



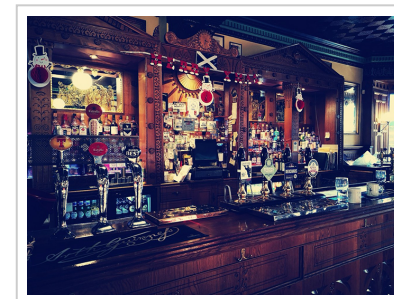
Theatre Royal ★

The pub is at the base of a tenement built late 1700s and Grade B-listed. The heralding pipers in the stonework welcome visitors into a spacious pub with a large and beautiful island bar. There is an impressive ceiling and a superb Drybrough Brewery mirror. It is next door to the Playhouse Theatre.



Thomson's Bar ★

A splendidly re-created single-roomed bar in the style of Glasgow architect Alexander Thomson. The gantry and room panelling are inlaid with scenes from Greek mythology. The room has chequerboard lino flooring and half-height panelled walls and is decorated with rare mirrors, adverts and point of sale material from long-forgotten breweries. A superb restoration.



Edinburgh

1 St. Andrew Square, , Edinburgh, EH2 2BD

Tel: (0131) 557 3228

Email: Info@tilesbar.co.uk

Website: <https://www.tilesbar.co.uk/>

Tiles Bistro Bar ★

This Grade B-listed Renaissance four-storey building of 1890s was a headquarters for Prudential Insurance Company. The high-ceilinged former public office is tiled from floor to ceiling in buff, brown, cream and light blue and there is more tiling in the corner entrance porch. There are two central pillars supporting lateral arches and huge lamps. Service is from an island bar.



Essex

Colchester

4 St John's Street, , Colchester, CO2 7AA

Tel: (01206) 571003

Website: <http://www.jdwetherspoon.co.uk/home/pubs/the-playhouse>

Littley Green

, , Littley Green, CM3 1BU

Tel: (01245) 362308

Email: compasseslittleygreen@googlemail.com

Website: <http://www.compasseslittleygreen.co.uk>

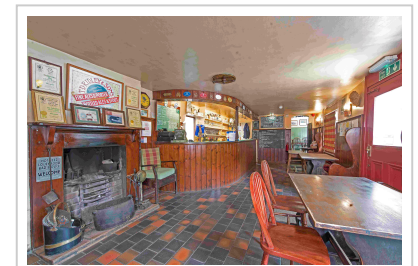
Playhouse ★

A large Wetherspoon's in an old theatre retaining many decorative features from its heyday. It was redesigned in 1930s to become a cinema with the gallery removed and the balcony enlarged. It has a large central bar and varied seating areas.



Compasses ★

Refurbished by Ridleys as their brewery tap, it has rooms of character, seemingly an unspoiled, picturesque Victorian country pub in a quiet hamlet. A wood-panelled bar has benches round the walls and a tiled floor. Beers are drawn direct from casks in the half-cellar. Serves giant baps called Huffers and traditional dishes. A large garden, accommodation and a roster of different events. Real ales and ciders.



Compasses bar

Glamorgan

Cardiff

81-83 St Mary Street, City Centre, Cardiff, CF10 1FA

Tel: (029) 2064 4449

Website: <https://www.jdwetherspoon.com/pubs/all-pubs/wales/cardiff/the-prince-of-wales-cardiff>

Cardiff

St Fagans National Museum of History, St Fagans, Cardiff, CF5 6XB

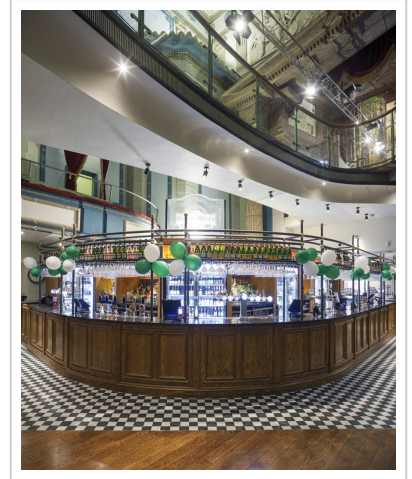
Tel: 0300 111 2333

Email: stfagans@museumwales.ac.uk

Website: <https://museum.wales/stfagans/whatson/12247/Visit-The-Vulcan-Hotel/>

Prince of Wales ★

A pub that occupies two storeys of the former Prince of Wales Theatre from late 1800s magnificently refurbished by Wetherspoon's. It is Grade-II listed. It has one of the most dramatic pub ceilings in the UK. Overall the effect is spectacular with the pub's sweeping lines and embrace of modern materials.



Vulcan Hotel ★

The Vulcan was originally a working-class establishment that could lay claim to being one of Cardiff's oldest. It served the predominantly Irish community in what was then called Newtown. It closed in 2012 and was dismantled and rebuilt over four years at St Fagan's National Museum of History, Amgueddfa Cymru-Museum Wales, opening to visitors in May 2024. The brick-by-brick reconstruction using original materials shows the pub as it was in 1915, just after it had undergone a major redesign and refurbishment of its interior. It retains an appealing simplicity of decor and fittings to evoke a pub from the early years of the C20. It operates as a real pub inside the museum, selling real ale to museum visitors.

Vulcan Hotel bar

Image not found or type unknown

Vulcan Hotel bar

Gloucestershire & Bristol

Bristol

43-45 Corn Street, , Bristol, BS1 1HT

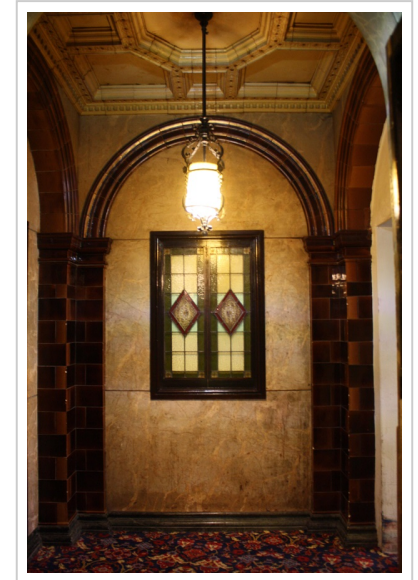
Tel: (0117) 927 9681

Email: P183@jdwetherspoon.co.uk

Website: <https://www.jdwetherspoon.com/pubs/the-commercial-rooms-bristol/>

Commercial Rooms ★

This is a Wetherspoon's pub in a Grade II-listed building dating from 1810. The interior features Greek Revival-style decor, with a stunning ceiling with a skylighted dome, portraits and memorabilia from its days as a businessmen's club. A textbook conversion, blending pub fittings with a splendid old building.



Cheltenham

20 High Street, , Cheltenham, GL50 1DZ

Directions: East end of High Street, past Strand on right

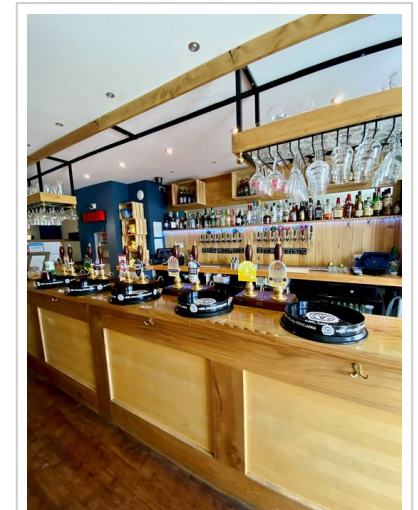
Tel: (01242) 690242

Email: info@sandfordparkalehouse.co.uk

Website: <http://sandfordparkalehouse.co.uk/>

Sandford Park Alehouse ★

A pub in the 'cafe-bar' style but done extremely well and offering plenty of different spaces. A U-shaped main bar area wraps around a new timber staircase with a bar billiards table at the far end. There is a small front snug room and space upstairs as well as on the garden. The building is Grade II-listed.



bar

Gloucester

38, Southgate Street, , Gloucester, GL1 2DR
Directions: On Southgate St opposite St Mary de Crypt Church.
Tel: (01452) 526685
Listed Status: II*

Tewkesbury

108 Church Street, , Tewkesbury, GL20 5AB
Tel: 07931 692227
Email: realales@thecrosshousetavern.pub
Listed Status: II*

Thornbury

8 High Street, , Thornbury, BS35 2AQ
Tel: (01454) 411517
Email: hello@thebutchershookthornbury.co.uk
Website: <http://www.thebutchershookthornbury.co.uk>

Robert Raikes's House ★

Robert Raikes's House occupies a magnificent Grade II*-listed timber-framed merchant's-house dating from 1560. It is named after the founder of the Sunday School movement, one of Gloucester's most famous sons. He took over ownership of the Gloucester Journal from his father and in 1758 he moved it into this building, where he and his family later lived also. It became a merchant's house and shop before becoming a restaurant and then a pub in 1975. It was reopened in 2008 after a two-year refurbishment by Sam Smiths. Their restoration is exceptional and inside is a maze of wooden pillars and beams largely faithful to the house's old plan and structure. The pub serves real ale and meals.



Robert Raikes's House lounge

Cross House Tavern ★

The pub has been converted with a great deal of dedication into a Victorian-style establishment serving real ales and ciders. The beer is served from tapped casks. Nearly all drinks are sourced from within 20 miles. The Grade II*-listed three-storey timber-framed building was originally two houses in the early C16. A third storey was added in C17 and it was converted into a single home in C19. In recent years the ground floor was two shops and the pub comprises a main room with interwar tiled walls, a snug and a back room with a splendid range fireplace surrounded by a display of Delft tiles. There is no food.

Butcher's Hook ★

Grade II-listed building which dates to mid C17 and was a butcher's shop for 200 years. The building has superb period features throughout its three rooms, such as fireplaces and alcoves and ceiling beams plus an ancient and massive front door. Plenty of ales and ciders on offer, as well as local cheeses and pies. Not open lunchtimes except Saturdays.



Greater Glasgow & Clyde Valley

Cambuslang

52-58 Main Street, , Cambuslang, G72 7EP

Tel: (0141) 646 2411

Website: <https://www.jdwetherspoon.com/pubs/the-john-fairweather-cambuslang>

Listed Status: C

Glasgow

2 St Vincent Place, City Centre, Glasgow, G1 2DH

Tel: (0141) 225 0160

Website: <https://www.jdwetherspoon.com/pubs/the-counting-house-glasgow>

Glasgow

206 Dumbarton Road, Partick, Glasgow, G11 6UN

Tel: (0141) 576 0102

Email: lismorebar@gmail.com

John Fairweather ★

A Wetherspoon's pub in the Grade C-listed old Savoy cinema, which dates from 1929 and was designed in a neo-classical style by John Fairweather after whom the pub is named. Many of the old features have been retained and restored. The pub is watched over by old movie stars sitting on the balcony.



Counting House ★

Grade A-listed former Bank of Scotland office from 1870 in Italian Renaissance style. It has been splendidly reused as a Wetherspoon's with a magnificent spacious former banking hall containing a glazed dome and 16 caryatids. It has a number of small rooms, and the old bank safes are still to be seen. Wide selection of ales, ciders and meals.



Lismore ★

A one-time corner tenement pub completely transformed with a Scottish baronial interior of dark wood panelling and bare stonework. There are superb Art Deco lamps. The wonderful set of six stained glass windows show beer-related scenes. Good bar, gantry and stone fireplace. A second room has a counter and spirit barrel gantry, with the coopers' trade celebrated in the front window panels. The urinals are dedicated to those who suffered in the Highland clearances. Real ales and ciders. No food.



Glasgow

Byres Road, Hillhead, Glasgow, G12 8QX

Tel: (0141) 357 6200

Email: info@oran-mor.co.uk

Website: <http://oran-mor.co.uk/>

Glasgow

148 Holland Street, Charing Cross, Glasgow, G2 4NG

Tel: (0141) 332 2159

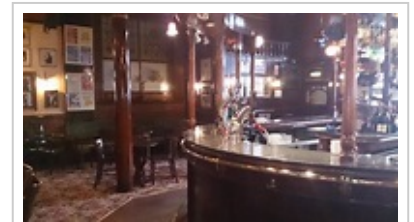
Oran Mor ★

A fantastic conversion of a church into a multi-purpose theatre, music and arts venue with space for simply drinking. The Italianate Gothic-styled church was built in late 1800s and is Grade B-listed. There is a gallery on an upper level. Real ale and meals are served.



State Bar ★

Opened in 1906 but the Edwardian interior was lost in a 1960s refurbishment. The restoration has a neo-Victorian island bar and an original stained-glass heraldic window. Excellent pub with real ales. Meals are lunchtimes only.



internal

Greater London Central

City of London

9 Gracechurch Street, , City of London, EC3V 0DR

Tel: (020) 7623 4824

Email: p364@jdwwetherspoon.co.uk

Website: <https://www.jdwwetherspoon.com/pubs/the-crosse-keys-city-of-london>

Listed Status: II

Clerkenwell

55 Britton Street, , Clerkenwell, EC1M 5UQ

Tel: (020) 7490 4281

Email: contact@theholytavern.com

Website: <https://theholytavern.com/>

Listed Status: II

Liverpool Street

Unit 32, Street-level Concourse, Liverpool Street Station, , Liverpool Street, EC2M 7PY

Tel: (020) 7247 3579

Email: p42@jdwwetherspoon.co.uk

Website: <https://www.jdwwetherspoon.com/pubs/hamilton-hall-city-of-london>

Listed Status: II

Crosse Keys ★

A palatial Wetherspoon's in the former 1913 HQ of Hong Kong and Shanghai Bank, Grade II-listed. A sumptuous banking hall filled with marble, tile and mosaic flooring and Doric columns topped by spectacular domed skylights. The oval bar is in the centre of this magnificence.



Holy Tavern ★

A merchant's house dated 1719 which became a coffee shop and was converted by St Peter's Brewery into a three-roomed pub that re-creates an C18 tavern. It has a well-preserved early C19 wooden shop front. The decor is bare wooden floors and bare walls, with wooden chairs and tables, all done in a nicely understated way. Grade II-listed.



Hamilton Hall ★

Once the grand ballroom of the Great Eastern Hotel, there is sumptuous Rococo plasterwork and panelling, including painted scenes set in Rococo frames, modelled on an apartment in Paris. It is now a Grade II-listed Wetherspoon's pub serving a wide range of ales and ciders. The pub use has been fitted in especially well. Plenty of snacks and meals on offer in this beautiful building.



London

12-13 Wells Street, Fitzrovia, London, W1T 3PA
Tel: (020) 7323 1228

London

27 Great Portland Street, Fitzrovia, London, W1W 8QE
Tel: (020) 7631 5002
Website: <https://cocktavern-london.co.uk/>

Champion ★

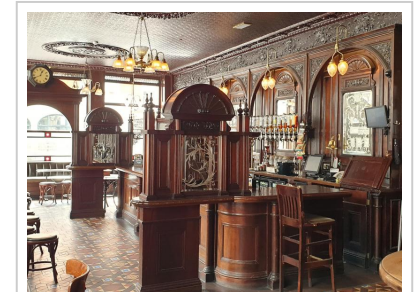
Great restoration work by Samuel Smith, the pub has an attractive, traditional interior and exterior. Stunning stained-glass windows depict champions in sport and other fields. Grade II-listed. Meals but no real ale. Closed on Sundays.



Exterior

Cock ★

The building dates from 1898 and has been restored by Sam Smith to seem like an authentic late-Victorian pub. There are huge glass lanterns outside and polished dark woodwork, snob screens and tiled flooring within. Features such as the bar back, panelling and fire surround are original and elsewhere the brewery has given good attention to details such as mirrors and glass, ceiling roses and partial partitions, one of which is topped by a splendid clock. Food is served in an upstairs lounge and real ale is available.



Cock interior

London

50 Cornhill, Gracechurch Street, London, EC3V 3PD

Tel: (020) 7283 7123

Email: countinghouse@fullers.co.uk

Website: <https://www.the-counting-house.com/>

Listed Status: II

London

26 Bride Lane, Temple, London, EC4Y 8DT

Tel: (020) 7353 3693

London

37 Brewer Street, Soho, London, W1F 0RY

Tel: (020) 7437 6819

Counting House ★

Previously a bank, this Fullers pub opened in 1997 and won an award for its sensitive refurbishment. Its large oval servery is illuminated by a stained-glass dome, as is an upstairs gallery. The former manager's offices to the rear are used as function rooms. A war memorial commemorates the staff who died in the Great War. The building dates to 1893 and the foundations sit partly on a wall of an approximately 2000 year-old Roman basilica. Grade II-listed. Real ales, meals and accommodation. Pub is closed at weekends.

Bar

Image not found or type unknown

Bar

Crown & Sugar Loaf ★

A classy reconstruction of a tiny pub by Sam Smith's occupying an area which was part of a bar of the Grade II-listed Punch Tavern. The interior is a magnificent version of a Victorian gin palace with much wood and etched glass and mirrors. Pub snacks but no real ale. Closed at weekends.



Duke Of Argyll ★

A large corner pub and a trademark, top-notch Sam Smith's refurbishment, returning it to something like its former Victorian glory. Four snugs around the bar have been re-installed with screens in accordance with the plans from 1886. A first-floor lounge has also been added. Meals but no real ale.



London

16A Charlotte Street, Fitzrovia, London, W1T 2LY

Tel: (020) 7580 3714

Website: <https://fitzroytavern.co.uk/>

Fitzroy Tavern ★

The building started life as a coffee house in 1883 and became a pub in 1887. A fantastic transformation by Sam Smith's in which a large island bar serves six separate drinking areas with screens, some connected internally. There is a profusion of etched glass, mirrors, tiles and wood panelling. The pub has a distinctly bohemian history from the 1920s, frequented by eminent literary figures, artists, musicians, politicians and many other notables. More than just a London public house. Won the CAMRA Pub Design Award for refurbishment in 2017. Real ale and meals.



Exterior

London

128 Great Portland Street, Fitzrovia, London, W1W 6PS

Tel: (020) 7580 4726

Horse & Groom ★

A pub has stood on the site since the mid 18C and the existing building with its impressive tiled frontage was remodelled around 1895. Downstairs the old layout of three rooms is pleasingly retained, as is the skylight in what would have been the billiards room. All areas have been well restored, most notably by current owners Sam Smith, using high-quality fittings, such as a lot of wood, etched glass, mirrors and good flooring, to deliver a Victorian-style pub. In a nod to its name, old prints on the walls have an equine theme. Meals are served in an upstairs room. There is no real ale and the pub is closed on Sundays.



Horse & Groom exterior

London

39 Broadwick Street, Soho, London, W1F 9QJ
Tel: (020) 7437 1344

London

95 Chancery Lane, Holborn, London, WC2A 1DT
Tel: (020) 7831 2660
Email: enquiries@thelastjudgment.co.uk
Website: <https://thelastjudgment.co.uk/>
Listed Status: II

London

194 Fleet Street, Aldwych, London, EC4A 2LT
Tel: (020) 7430 2255
Email: oldbankofengland@mcmullens.co.uk
Website: <https://www.mcmullens.co.uk/local-pub/old-bank-of-england/>
Listed Status: II

John Snow ★

Rebuilt in 1867 it was a multi-roomed corner pub until the 1970s. Sam Smith's has put back screens to recreate a classic three-roomed pub. One screen has a low door for servicing. The three-bay bar back and counter look Victorian but most of the etched glasswork is good quality replacement. There is a lounge upstairs. The pub was renamed in 1956 after the doctor who proved the connection between cholera and contaminated water from the nearby water pump. Sells meals but not real ale.



Last Judgment ★

This pub was until early 2023 called the Knights Templar, named after the military order founded in C12 and dissolved by the Pope in 1312 that owned land hereabouts. This imposing conversion of a Grade II-listed banking hall has left rich Renaissance detailing largely intact. The grand high-ceilinged bar retains many decorative features including magnificent columns supporting the ceiling with its illustrated panels and large chandeliers. A variety of seating areas are provided, including panelled mezzanine rooms with balconies overlooking the bar. Meals and a wide choice of real ales.



Old Bank Of England ★

A Grade II-listed building from 1888 and the former premises of the Fleet Street branch of the Bank of England and then a building society office, sensitively refurbished. Murals reference the rich history of the area. Ornate high ceilings and chandeliers. Managed by McMullen's offering ales and meals. Closed Sundays.



London

21-22 Maiden Lane, Covent Garden, London, WC2E 7NA

Tel: (020) 7379 7917

Email: myra@porterhouse.london

Website: <https://porterhouse.london/>

Porterhouse ★

A bewilderingly multi-levelled establishment, featuring riveted steel beams, industrial pipes, polished handrails and an impressive clock with exposed mechanism. It claims to be the largest pub in London. There are real ales, snacks and meals. A wall plaque commemorates that artist JMW Turner lived in a house on the site. Won the CAMRA Pub Design Award for refurbishment in 2001.



Greater London East

Leyton

265 High Road, , Leyton, E10 5QN

Tel: None

Email: leytonengineer@remarkablepubs.co.uk

Website: <https://theleytonengineer.co.uk/>

Listed Status: II

Shadwell

1 Graces Alley, , Shadwell, E1 8JB

Tel: (020) 7702 2789

Email: info@wiltons.org.uk

Website: <https://wiltons.org.uk/>

Listed Status: II*

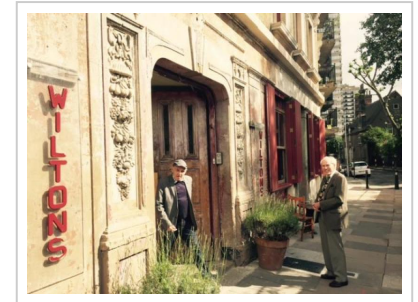
Leyton Engineer ★

In what was previously Leyton Town Hall, the 1895 Grade II-listed building is in Victorian classical style. The name comes from the Technical Institute which was at the rear with its own entrance. Several rooms with various features including mosaic flooring. A mixture of eclectic furniture and fittings. A first-rate restoration by Antic with a range of ales, ciders and meals. Only open at lunchtimes Friday to Sunday.



Wilton's Music Hall Mahogany Bar ★

This well-executed bar is in Wilton's, London's oldest surviving music hall, built in 1859 to bring West End glamour to the East End. It has been rescued from near-derelection and is Grade II*-listed. Evidence of its chequered history has been retained by bare bricks, varying levels and odd doorways. The papier mfch, bar front has been restored incorporating the remaining fabric and some plaster panels survive on the walls. Seating is an eclectic collection of tables and chairs. Real ales and meals. The hall still has a programme of theatre and music all year round and can be viewed outside performance times. Open evenings only and closed on Sundays.



Greater London North

London

338-346 Holloway Road, Holloway, London, N7 6NJ

Tel: (020) 7062 6352

Website: <https://thecoronet.uk/>

Coronet ★

An exceptional and sympathetic Wetherspoon's conversion of an Art Deco cinema retaining much of its original interior. The former grandeur of the 1940 cinema is still visible, including its projector. Wide range of real ales, ciders and meals.



London

44 Essex Road, Islington, London, N1 8LN

Tel: (020) 7354 9993

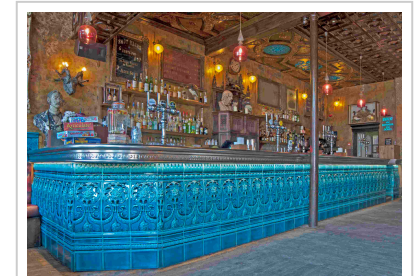
Email: bookings@theoldqueenshead.com

Website: <https://theoldqueenshead.com/>

Listed Status: II

Old Queens Head ★

The pub has a striking and opulent interior design, incorporating some original C17 features. Wooden tables and stools, booths, leather settees and benches, carved stone fireplaces and extravagant tiling are the setting for unusual decorations such as antlers and animals and an ornate ceiling. A stunning ceramic pewter-topped bar counter has been installed. Grade II-listed. Meals but no real ale.



Old Queens Head - ceramic bar counter

London

King's Cross Railway Station, King's Cross, London, N1C 4AP

Tel: (020) 7713 7258

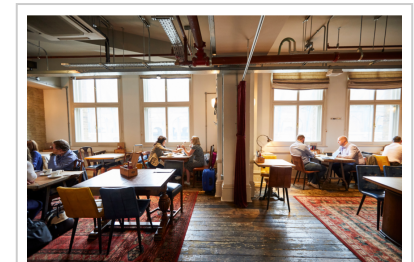
Email: Parcel.Yard@fullers.co.uk

Website: <https://www.parcelyard.co.uk/>

Listed Status: I

Parcel Yard ★

Imaginative and sensitive conversion of the station parcel sorting office across two floors, with a number of separate rooms. Owned by Fuller's, serving a range of cask beers and meals.



Interior

Greater London North West

Kilburn

33 Carlton Vale, , Kilburn, NW6 5EU

Tel: (020) 7625 4760

Email: hello@carlontavern.co.uk

Website: <https://www.carlontavern.co.uk/>

Carlton Tavern ★

A site now famous because, after being illegally demolished in 2015, the developer was forced to rebuild using matching materials inside and out, resulting in a handsome pub harking back to its first incarnation from 1921. Much was salvaged from the wreckage, including tiles, bricks, bars and fireplaces, whilst the kitchen has been moved to the basement. The left hand bar is accessed from the side door retaining its original tiled floor, but modern tiling on the walls. The panelled bar counter is original but the bar back is modern. An original tiled, ceramic and wood surround fireplace survives (some wood replaced). The ornate plasterwork ceiling has been skilfully replicated. Good but new fixed seating. Front right bar is new apart from some of the bar back and counter. The dining room has cross beams and more plasterwork detail. You will find real ales and meals being served.



Carlton Tavern exterior

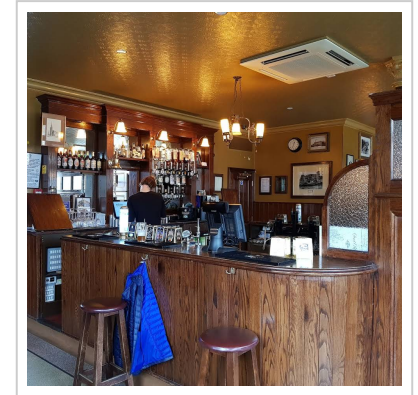
Greater London South East

Bermondsey (East)

101 Bermondsey Wall East, , Bermondsey (East), SE16 4NB
Tel: (020) 7394 3214
Listed Status: II

Angel ★

Fabulous views of the river and the city are available from inside and outside this Grade II-listed pub on the south bank of the Thames. The characterful and tastefully restored interior with separate rooms and partitioned areas is in typical Sam Smith's style.



Bromley

194 High Street, , Bromley, BR1 1HE
Tel: (020) 8464 7656
Email: partridge@nineheads.co.uk
Website: <https://www.partridgebromley.co.uk/>

Partridge ★

A Grade II-listed former NatWest bank with an impressive circular entrance lobby with domed ceiling and marble pilasters. It is now a Fuller's pub retaining many original features including the high ceilings and chandeliers. The classy conversion includes a gorgeous bar back. There are two small snugs off the main bar.

Interior

Image not found or type unknown

Interior

Greenwich

11 Victoria Parade, , Greenwich, SE10 9FR
Tel: (020) 8222 9310
Email: sailloft@fullers.co.uk
Website: <https://www.sailloftgreenwich.co.uk/>

Kidbrooke

7 Peglar Square, , Kidbrooke, SE3 9FW
Tel: (020) 3437 1410
Email: thedepot@youngs.co.uk
Website: <https://www.thedepotpub.co.uk/>

London

44 Tabard Street, Borough, London, SE1 4JU
Tel: (020) 7357 7173
Email: enquiries@royaloaklondon.co.uk
Website: <https://www.royaloaklondon.co.uk/>

Sail Loft ★

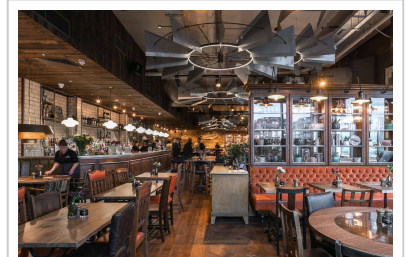
A Fuller's pub which opened in 2016 giving commanding views of the Thames and Canary Wharf on three sides and over two floors. It is a well-executed, modern design, taking full advantage of the spectacular location on the river. There is a large island bar, an open kitchen and exposed ducting. Upstairs is another smaller bar and further seating. Won the CAMRA Pub Design Award for new build in 2017. Real ales and ciders and meals.



Interior

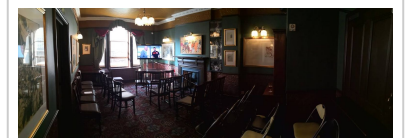
Depot ★

This is a Young's house in a new development, opened in 2019. The pub's name refers to the site's past as part of an RAF station where barrage balloons were stored. One wall has a mural reflecting this heritage. The design features exposed brickwork and ducting with contemporary furnishings. Real ale and meals.



Royal Oak ★

Victorian corner pub carefully restored by Harvey's to how it might have been in the 1850s. Two bare-boarded bars are separated by an off-sales area. The partitions have good quality glass and there are mahogany bar fittings. Prints and old photographs adorn the traditional interior. A delightful pub serving real ales and cider and providing meals.



internal

Greater London South West

Battersea Power Station

12-14 Arches Lane, , Battersea Power Station, SW11 8AB

Tel: (020) 8161 2366

Email: hello@batterseabrew.co.uk

Website: <https://batterseabrew.co.uk/>

London

53 Kinnerton Street, Belgravia, London, SW1X 8ED

Tel: (020) 7235 1135

Battersea Brewery Tap Room ★

Opened in 2018 as the brewery tap in railway arches alongside the Battersea Power Station development, which includes a new underground station close by. A striking contemporary design.



Nags Head ★

This pub of considerable charm and character appears to be a genuine early Victorian beer house, but it has been considerably altered. The upper bar is the combination of a tiny public bar and smoke room. It has two fireplaces and the lowest counter in London if not in the country. Mounted on the counter is a marvellous pewter beer engine with pink ceramic handpulls. The walls are crammed with pictures and a collection of memorabilia includes a 'What the butler saw' machine and two early fruit machines. Stairs lead to a minute upstairs drinking area and there is a small panelled lounge bar downstairs with a fireplace and stone flags. House rules include that coats must be hung on hooks and no use of mobile phones. There are real ales and meals.



London

37 Whitehall, Whitehall, London, SW1A 2BX

Tel: (020) 7839 8577

Email: oldshades@youngs.co.uk

Website: <https://www.oldshades.co.uk/>

Listed Status: II

London

23 Francis Street, Westminster, London, SW1P 1DN

Tel: (020) 7834 7260

Email: info@windsorcastle-victoria.co.uk

Website: <https://windsorcastle-victoria.co.uk/>

Putney

94-98 Upper Richmond Road, Putney, SW15 2SP

Tel: (020) 8161 2428

Email: hello@eastputneytavern.co.uk

Website: <https://www.eastputneytavern.co.uk/>

Old Shades ★

The name refers to the pub cellars. It was rebuilt in 1898 in the Gothic-influenced Arts & Crafts style and is Grade II-listed.

The long, narrow, wood-panelled pub widens into a dining room at the back. A gilded cupola with stained glass lights the central bar, which has an impressive Victorian tiled front. Real ale and meals.



Windsor Castle ★

Sam Smith's tastefully refurbished this pub and gave back its original name to create a six-roomed establishment. It has several impressively screened drinking areas, a comfortable lounge to the rear and an attractive upstairs room. Two fine lanterns enhance the entrances. Real ale and meals.



East Putney Tavern ★

A pub that is full of contemporary design imagination and highly popular with a younger crowd. There are three levels with different characters to each, all done with style. There is also a terrace and a lovely garden. The front bar has an open aspect with full-height glazing to the road. There is real ale and meals.



Surbiton

St Marks Hill, , Surbiton, KT6 4LQ

Directions: on B3370

Tel: (020) 8390 6164

Email: p453@jdwetherspoon.co.uk

Website: <https://www.jdwetherspoon.com/pubs/the-coronation-hall-surbiton>

Coronation Hall ★

This 1911 building has had a variety of former lives as music hall, cinema, bingo hall and was even home to Britain's first licenced striptease artist in 1940. There is a great ceiling, impressive bar counter and good-looking fittings. Decor includes a mix of movie stars, film artefacts, the coronation of George V and the planets. Real ales and meals along the usual Wetherspoons's lines.



Greater London West

Kensington

127-129 Kensington Church Street, , Kensington, W8 7LP

Tel: (020) 7123 7929

Email: thebluestoops@allsopps.com

Website: <https://www.thebluestoops.com/>

Notting Hill

277-281 Westbourne Grove, , Notting Hill, W11 2QA

Tel: (020) 7727 6335

Email: info@earloflonsdale.co.uk

Website: <https://earloflonsdale.co.uk/>

Blue Stoops ★

Restored to pub use by Allsopp's Brewery, which has installed beer engines with high 'swan necks', allowing the theatrical pumping of ale. The décor is impressive with a spectacular, bright blue ceramic bar counter embossed with the brewery logo and other motifs. The counter is complemented by an eye-catching, elegant bar back, a painted ceiling and floor tiling. There are various memorabilia and a marvellous brewery mirror on the walls. Everything has been realised with considerable care and flair. There are meals all day and a choice of real ales.

Blue Stoops main bar

Image not found or type unknown

Blue Stoops main bar

Earl of Lonsdale ★

Named after the founder of the Automobile Association and restored by Sam Smith's into a Victorian-style temple of dark wood and etched glass. The pub is divided by wood and glass screens into five drinking areas with small low doorways to allow movement between. Meals but no real ale.



Greater Manchester

Bolton

Crompton Way, , Bolton, BL1 8TJ

Tel: (01204) 591798

Website: <http://www.tobycarvery.co.uk/restaurants/north-west/boltonlancashire>

Listed Status: II

Bury

36 Haymarket Street, , Bury, BL9 0AY

Directions: opp Metro/Bus Station interchange

Tel: (0161) 705 4040

Email: p6264@jdwetherspoon.co.uk

Website: <https://www.jdwetherspoon.com/pubs/all-pubs/england/greater-manchester/the-art-picture-house-bury>

Manchester

57 Mosley Street, , Manchester, M2 3FF

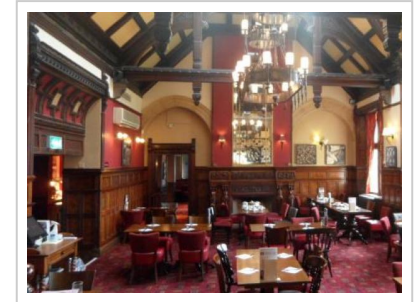
Directions: jct Charlotte St

Tel: (0161) 228 7560

Website: <http://www.nicholsonspubs.co.uk/thebankmanchester/>

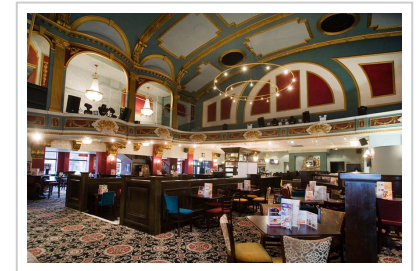
Toby Carvery Watermillock ★

A Grade II-listed building from the 1880s that is a jaw-dropping conversion of a mill-owner's mansion to create a large, imposing pub in its own grounds. It was converted into a restaurant in the 1990s but keeping a well-preserved interior. The hall has a staircase and an impressive lantern; a number of ground floor rooms have grand fireplaces and there is a high-ceilinged billiards room.



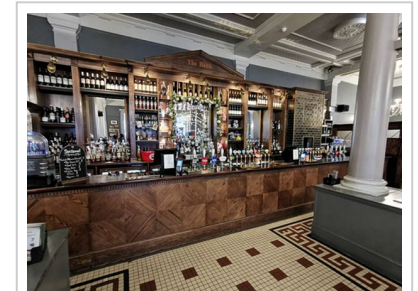
Art Picture House ★

This is a fine example of an early 1920s cinema, exceptionally theatrical in its plan and decoration. It has been beautifully converted by Wetherspoon's and is Grade II-listed. The large seating area on two levels has several private booths at the rear of the bar.



Bank ★

This Nicholson's pub occupies a handsome Greek Revival building that is over 200 years old. Originally built to house the Portico Library (which still occupies the upper floor), the pub occupies the former newsroom. The open-plan interior is neatly split and retains original features and impressive columns that give it an air of grandeur, evocative of a gentlemen's club. It is Grade II*-listed. Real ales and meals.



bar

Manchester

Victoria Station Concourse, Hunts Bank, Manchester, City Centre, Manchester, M3 1NY

Directions: On Victoria railway station

Tel: (0161) 835 9586

Email: press.office@ssp-intl.com

Website: <http://thebeerhouseuk.com/locations/manchester-victoria/>

Manchester

1 York Street, , Manchester, M2 2AW

Tel: (0161) 819 1055

Website: <http://www.browns-restaurants.co.uk>

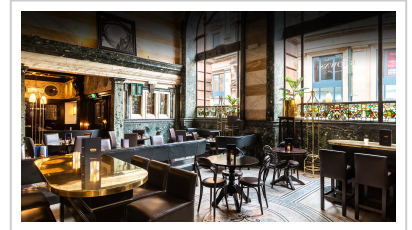
Beer House ★

This is a great building refurbished and reopened as part of the upgrade of Victoria Station in 1909. The bar forms part of the Grade II-listed station building, and its art nouveau style is still apparent, topped with an impressive domed glass ceiling. There are tiled walls with a mosaic frieze above, marble pilasters and a marble floor. The tilework near the bar shows a map of the Lancashire and Yorkshire railway system. On the platform side outside there is colourful mosaic lettering. The pub serves meals and ales.



Browns Bar & Brasserie ★

Originally occupied by Parr's Bank the 1902 building is a superb example of Edwardian baroque with art nouveau detailing. It is among the most opulent of the surviving banking halls. An impressive vestibule entrance leads to a large room hosting an imposing island bar and stylish seating areas with interesting nooks and crannies. These are complemented by massive marble pillars, an ornate plasterwork ceiling and frieze, rooms partitioned by a full height screen and mahogany panelled walls and a fireplace. Operated by M&B with meals but no real ale. Grade II*-listed.



Manchester

2 Oldham Road, , Manchester, M4 5FE
Directions: Corner Great Ancoats Street
Tel: None
Email: info@thecrownandkettle.com
Website: <https://www.thecrownandkettle.com/>
Listed Status: II

Manchester

17 Blossom Street, Manchester, , Manchester, M4 5AN
Directions: Corner Henry Street
Tel: None
Email: info@ec-ancoats.com
Website: <https://www.ec-ancoats.com/>

Crown & Kettle ★

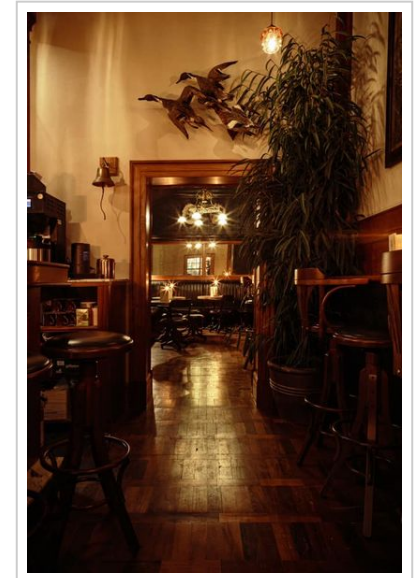
This Grade II-listed free house reopened in 2005 after 16 years' closure following a fire. The restoration was done with Historic England, paying close attention to the spectacular and distinctive ceiling. The central bar has a large drinking area in front with a small vault and a snug at the rear. The pub dates from around 1800 and benefitted from its prominent location close to Smithfield markets. A refurbishment has left a mix of traditional and contemporary design such as painted walls and exposed brick and wood panels. The ceiling remains in its impressive glory with stone columns, which used to hold chandeliers, hanging from intricately detailed ceiling roses. Long traditional windows let in lots of natural light, in which the gold counter taps and brass lamps shine. A wood burning fire and dark walls make for a cosy setting in winter.



Crown & Kettle exterior

Edinburgh Castle ★

This pub had been closed for many years and reopened recently after major refurbishment. It has been tastefully renovated with a long and impressive marble topped bar. Rooms off sport mirrors and dark wood. A good job has been done throughout, including lovely floors. There are real ales and meals.



Manchester

80 Great Bridgewater Street, , Manchester, M1 5JG

Directions: Behind the Bridgewater Hall

Tel: (0161) 235 6500

Email: rain.bar@jwlees.co.uk

Website: <http://www.rain-bar.co.uk>

Salford

11 Bexley Square, , Salford, M3 6DB

Directions: Off A6 Chapel St, close to Magistrates Court

Tel: (0161) 832 7082

Email: tim@thenewoxford.com

Website: <http://www.thenewoxford.com>

Rain Bar ★

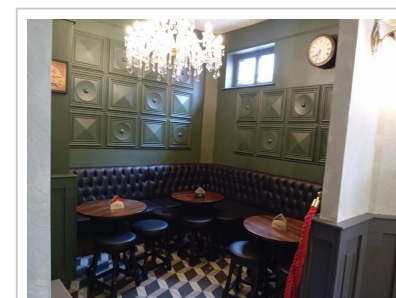
This large pub is in a prime spot on the Rochdale canal, close to Bridgewater Hall. It was formerly an umbrella factory, converted by JW Lees into a pub in the 90s and refurbished. The ground floor area curves round three sides of the large bar, with a variety of raised and sunken areas helping to break up the room. A lot of thought and effort has gone into making a good drinking experience, skilfully combining traditional and contemporary elements. The décor uses dark wood and leather to good effect alongside open fires to create a cosy feel. There is a patio alongside the canal, one of the largest beer gardens in the city centre, busy in the summer. Upstairs are two floors of function rooms.



Rain Bar exterior

New Oxford ★

This was a basic, two-roomed street-corner local from the 1830s. Refurbishment has made better use of the space, converting the kitchen into a delightful snug. The interior blends contemporary and historical elements with an old-looking servery, polished flooring and fixed seating to retain a sense of a proper pub with Victorian roots. The new look features bottle-green banquette seating, repainted walls and an old copper bar counter that has been turned so that it serves both the front and back rooms. A new bar-back runs along the side wall with a simple but classical design including the central clock from the 1800s that has a surrounding wreath picked out in gold. A doorway has a beautiful stained-glass window from the 1900s. The pub has won many CAMRA awards and has a huge selection of canned, bottled and keg beers alongside an impressive real ale range. There is no food beyond snacks.



New Oxford bar

Stockport

20 Great Underbank, , Stockport, SK1 1LW

Directions: jct Deanery Way

Tel: (0161) 243 9000

Email: info@whitelioncoachinghouse.com

Website: <https://www.whitelioncoachinghouse.co.uk/>

Worsley

Worsley Park, off Walkden Road, , Worsley, M28 2QT

Directions: Next to Worsley Park Marriott Hotel

Tel: (0161) 703 8706

Email: worsley.old.hall@brunningandprice.co.uk

Website: <http://www.brunningandprice.co.uk/worsleyoldhall/>

White Lion ★

There has been a pub on this site since the 15C. The current building dates from 1904 and is a blend of late medieval and Baroque features in exuberant Edwardian style. It has been renovated and reopened in mid-2024 after being closed for fifteen years and suffering significant deterioration. The modern decor is attractive while honouring the pub's historic past. There are three large areas for drinkers. To the right is a performance space that features occasional live music, plus TV screens. To the left is comfortable seating and a lower area has a more intimate feel. Old photos of the pub and various artefacts decorate rooms and walls. An impressive room upstairs is available for hire. The pub serves real ale and meals.

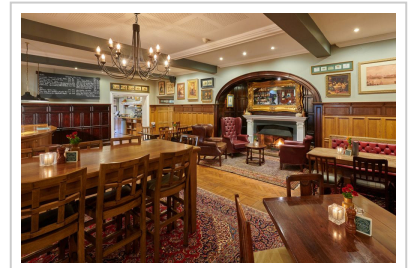
white lion exterior 2

Image not found or type unknown

white lion exterior 2

Worsley Old Hall ★

A Grade II-listed building, in Tudor style reopened after Brunning & Price embarked on a substantial programme of repair and renovation. It has spacious drinking and dining areas with comfortable seating and numerous pictures for interest. Lots of well-integrated original features. It was in the hall that James Brindley and the Duke of Bridgewater met to discuss their plan for the first true canal in the modern world. The large garden is set in woodland. A range of real ales and meals.



Gwent

Llanthony

Mill Farm, , Llanthony, NP7 7NN

Directions: Turn off the A465 Hereford Road at Llanfihangel Crucorney, turn left next to the Skirrid Mountain Inn, and continue for about 6 miles.

Tel: (01873) 890487

Email: llanthonypriory@btconnect.com

Website: <http://www.llanthonyprioryhotel.co.uk>

Listed Status: I

Llanthony Priory Hotel ★

A tiny, remarkable bar housed in the C13 crypt of an Augustinian priory whose substantial ruins dominate the valley between towering ridges. The bar has bench seating and settles and wall panelling, creating a characterful, pubby feel but respectful of the space. The splendid residents' lounge has a vaulted ceiling, early C19 range fireplace and antique settle. There is an ancient spiral staircase leading to the accommodation. It is well worth the long trip up the valley to this hamlet. There are real ales, meals and accommodation. The pub is closed on Mondays and between October and Easter the bar is liable to open only at weekends; it is best to check before setting out.



Hampshire

Basingstoke

Milestones Museum, Leisure Park, Churchill Way West, ,
Basingstoke, RG22 6PG

Website: <https://www.milestonesmuseum.org.uk>

Southampton

Wool House, Town Quay, , Southampton, SO14 2AR

Directions: Opposite Isle of Wight car ferry terminal

Tel: (023) 8083 6666

Email: info@dancingmanbrewery.co.uk

Website: <https://www.dancingmanbrewery.co.uk/>

Listed Status: I

Southampton

Commercial Road, , Southampton, SO15 1GG

Tel: (023) 8023 1101

Email: enquiries@papillon-southampton.co.uk

Website: <https://papillon-southampton.co.uk/>

Listed Status: II

Baverstock Arms ★

This pub has been built as part of the Milestones Museum. It is a single room with bare floor, dado panelling, a large fireplace, benches and pews. There is a bar counter and a salvaged bar back that is said to be Edwardian. The bar back mirror is from Gale's and there is a whisky mirror over the fireplace. Operating at lunchtimes only and a museum entrance fee is payable.

Dancing Man ★

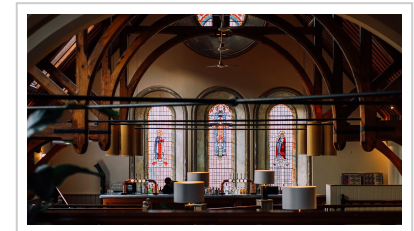
A pub that occupies a 14C Grade I listed building that was constructed by Cistercian monks from Beaulieu Abbey following a 1338 French raid on Southampton. For many years it was an important wool store and later became a prison for French sailors during the Napoleonic wars, some of whose names can still be seen carved into the roof beams. Later still it was used by boat builders and haulage contractors before becoming a maritime museum and an arts space. The pub is a stunning conversion with a new slate floor and plenty of design features to draw the eye, principally the spectacular ceiling and striking curved staircase. The space is uncluttered which lets the lovely old building shine. The first floor is available for events. Meals are served excepting Mondays and Tuesdays. Real ales are available from Dancing Man, brewed on site. There are also real ciders.



Interior

Papillon ★

Grade II-listed former church built 1845 and sold to developers in 1981. It is a smart conversion still featuring wooden beams and stained-glass windows with modern touches, such as lighting. Multiple raised areas and a mezzanine have been added. Real ale and meals.



Hertfordshire

Hertford

8 St Andrew Street, , Hertford, SG14 1JA

Tel: None

Website: <https://www.oldcrosstavern.com>

St. Albans

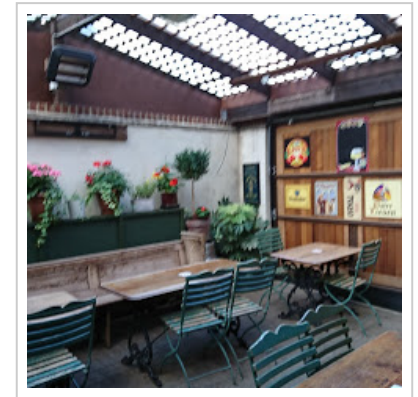
Civic Close, St Peter's Street, , St. Albans, AL1 3LE

Tel: (01727) 814100

Website: <https://www.jdwetherspoon.com/pubs/all-pubs/england/hertfordshire/waterend-barn-st-albans>

Old Cross Tavern ★

Superb free house with a friendly welcome converted from an antiques shop in a Grade II-listed building. No TV or music, just good old-fashioned conversation. A range of real ales and homemade pies available. Not open lunchtimes except at weekends.



Waterend Barn ★

Grade II-listed C16 and C17 barns that have been moved from their original sites. Converted into a Wetherspoon's, which has done a good job integrating pub use into the space with four drinking areas. Their work has brought spectacular Grade II-listed buildings back to life. A range of ales and ciders, and meals are served.



Kent

Aylesford

19 High Street, , Aylesford, ME20 7AX
Tel: (01622) 715066
Email: thelittlegem.orpubsltd@gmail.com
Listed Status: II

Canterbury

1-9 Church Lane, St Radigunds, , Canterbury, CT1 2AG
Tel: (01227) 454170
Website: <https://www.parrotcanterbury.co.uk/>

Little Gem ★

After lying empty for ten years, refurbishment has restored this C12 building as a pub, in keeping with its Grade II-listed status. It has a stunning, no-nonsense interior with exposed beams, low ceilings, whitewashed walls and a small seating area on a mezzanine gallery, which is handy given it is one of Kent's smallest pubs. A large inglenook fireplace provides warmth and there is none of the usual frippery to distract from enjoying a pint and conversation.



Little Gem fireplace

Parrot ★

One of the oldest buildings in the city, dating from C14 and Grade II* listed. Parts of the Roman wall remain in front. This was formerly St Radigund's Hall, a beautiful timber-framed Wealden hall house that was in danger of demolition in the 1930s but discovery of many original details led to restoration and it became a pub in 1987. It has a heavily beamed, part bare wood, part flagstone floored bar on the ground floor, and a stunning restaurant or function room on the first floor that has a fine roof with crown posts and brackets (best to visit at a quiet time to go upstairs and admire). The pub has an ancient brick fireplace and three open fires in total, sympathetic furniture and a lovely garden.



Canterbury

48 Northgate, , Canterbury, CT1 1BE

Tel: None

Website: <http://www.thethomastallisalehouse.co.uk>

Listed Status: II

Folkestone

23 Rendezvous Street, Baptist Galleries, , Folkestone, CT20 1EY

Tel: (01303) 251154

Website: <https://www.jdwetherspoon.com/pubs/the-samuel-peto-folkestone>

Maidstone

4A Knightrider Street, , Maidstone, ME15 6LP

Tel: (01622) 299283

Email: yethirstypig@gmail.com

Website: <https://www.yethirstypig.co.uk>

Listed Status: II*

Thomas Tallis Alehouse ★

The pub is in a lovely C15 half-timbered building, part of the historic Hospital of St John and Grade II-listed. There are two rooms at the front, one with a log-burning stove, separated by a low doorway. The rear snug has chairs and a sofa. It has in the past been a restaurant and a shop and time and thought has gone into its current pub incarnation to create a lovely, welcoming space.



Samuel Peto ★

This imaginative, striking Wetherspoon's conversion is named after a railway engineer and the builder of Nelson's column, who funded this former Baptist church in 1874. It has an impressive exterior featuring four massive columns and inside the façade of the pipe organ has been retained on the balcony. There are two pulpits upstairs. The pub features the original stained-glass windows, memorial plaques and hand-painted ceiling of fluffy clouds across a blue sky. There is a gallery with booths separated by short partitions and more booths on the ground floor. The toilets are in the crypt. Grade II listed, retaining the splendour and with an harmonious bar setting, the pub serves real ale, real cider and meals.

Olde Thirsty Pig ★

Splendid pub that is one of the oldest buildings in town, dating from around 1430. Grade II*-listed, It has a wealth of massive timber beams, sloping floors in five small rooms on two floors. It was originally a farmhouse within the estate of the archbishop's palace. It serves cask ales and ciders but does not provide meals.



Ramsgate

Harbour Parade, , Ramsgate, CT11 8LS

Tel: (01843) 854420

Email: p5994@jdwetherspoon.co.uk

Website: <https://www.jdwetherspoon.com/pubs/royal-victoria-pavilion-ramsgate/>

Listed Status: II

Tunbridge Wells

88 Mount Pleasant Road, , Tunbridge Wells, TN1 1RT

Tel: (01892) 511770

Website: <https://www.jdwetherspoon.com/pubs/opera-house-royal-tunbridge-wells>

Whitstable

16 - 18 Oxford Street, , Whitstable, CT5 1DD

Tel: (01227) 284100

Website: <https://www.jdwetherspoon.com/pubs/the-peter-cushing-whitstable/>

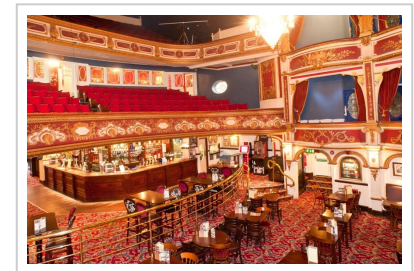
Royal Victoria Pavilion ★

A grand, totemic Grade II-listed building that was opened in 1904 as a dance hall and was then a casino. It is an impressive example of an Edwardian seaside pavilion that had become disused and dilapidated. It has been carefully converted into what is said to be the largest Wetherspoon's in the country, with two floors and two bars. Real ales and meals.



Opera House ★

One of the most spectacular interiors in the country, well converted with the pub elements fitting perfectly. Wetherspoon's has restored the old Opera House opened in 1902 to its former glory including the stage, stalls, circle and boxes, all enhanced by the huge central chandelier. Grade II-listed. A wide range of ales and the opportunity to eat or drink in splendid surroundings while you imagine performing on stage. It still closes once a year for ticketed opera performances.



Peter Cushing ★

A Wetherspoon's pub named after the Hammer Horror actor who was a Whitstable resident. It was previously a cinema and is decorated in striking style. The former ticket hall forms an entrance lobby with dado panelling. The old auditorium has a spectacular art deco theme with impressive hanging and wall lights. There are moulded architraves on the walls and a huge wood gantry set with a square clock, also in art deco style. Cinematographic equipment has been salvaged from the first floor projection area to show what was used in the building's previous incarnation. The strong homage to the cinematic past makes this an impressive and interesting place to drink. There are meals all day and real ales available.



Exterior

Lancashire

Clitheroe

Greenacre Street, , Clitheroe, BB7 1EB

Tel: (01200) 401035

Email: info@bowlandbeerhall.co.uk

Website: https://www.holmesmill.co.uk/beer-hall_/

Darwen

Railway Road, , Darwen, BB3 2RG

Tel: (01254) 778700

Website: <https://www.jdwetherspoon.com/pubs/the-old-chapel-darwen>

Preston

115 Friargate, , Preston, PR1 2EE

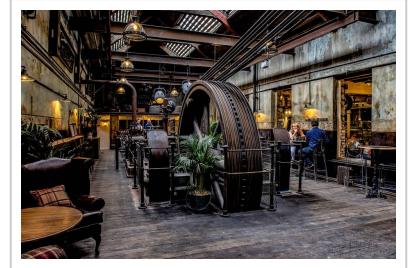
Tel: (01772) 288926

Email: George@plau.co.uk

Website: <https://www.plau.co.uk/>

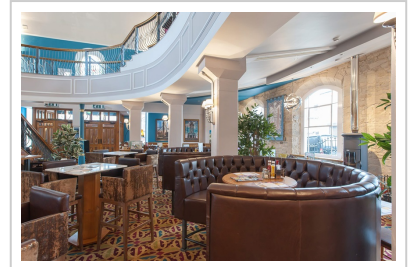
Bowland Beer Hall ★

A pub in part of the Grade II-listed former Holmes Mill dating to the C19. It has industrial decor and has the second longest bar counter in Britain at 105 feet 4 inches. Won the CAMRA Pub Design Award for conversion in 2017.



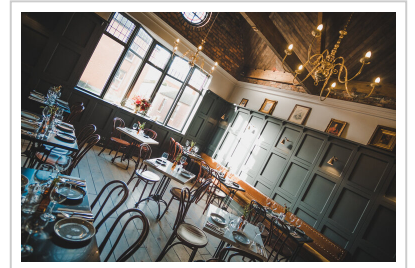
Old Chapel ★

A Wetherspoon's conversion of an 1865 Wesleyan Methodist chapel, now Grade II-listed. There is a spectacular open staircase leading to a balcony seating area. Plenty of seating in quieter areas away from the main bar.



Plau ★

Opened in 2018 after more than three years of careful and sensitive restoration of a building which dates from the C18. The name recalls that the Plough Inn previously occupied the property for over 200 years. The resurrection after 95 years of closure is a triumph. The main bar is on three levels with two more bars in an original vaulted brick cellar including a 40-foot stone-built well. Winner of the CAMRA Pub Design Award for conservation in 2019. Cask ales, real cider and meals.



Preston

14-15 Church Street, , Preston, PR1 3BQ

Tel: (01772) 550910

Email: p7078@jdwetherspoon.co.uk

Website: <https://www.jdwetherspoon.com/pubs/the-twelve-tellers-preston>

Twelve Tellers ★

This Wetherspoon's conversion occupies the former premises of Preston Savings Bank, later TSB, and is Grade II-listed. Many original features survive including plentiful oak panelling, marble and mosaic flooring and ornate ceilings. Several small rooms, two of which are in the former bank vaults, and alcoves enhance the largely open-plan interior. Attractive toilets too, especially the ladies that has retained original copper-work. Large range of cask ales and meals.



Interior

Leicestershire

Leicester

90-92 High Street, , Leicester, LE1 5YP
Tel: (0116) 253 1325

Leicester

12 Applegate, City Centre, Leicester, LE1 5LD
Tel: (0116) 262 2231
Email: info@wygstonshouse.co.uk
Website: <https://www.wygstonshouse.co.uk>
Listed Status: II*

Melton Mowbray

12, Burton Street,, , Melton Mowbray, LE13 1AE
Tel: (01664) 481336
Website: <https://theanneofcleves.com/>

Bruxelles ★

An established bar specialising in Belgian beers, cocktails and wine (no real ale). Converted from a branch of the Birmingham & Provincial Bank built 1903 in Neo-Classical style with an impressive, ornate, domed ceiling. The dome shows paintings of various scenes and is held up by marble pillars. The bar has two floors, courtyard and a spacious garden. No meals.



Cafe de Bruxelles dome

Wygston's House ★

The best preserved medieval house in Leicester has a Georgian brick frontage from about 1760 that is an extension to a medieval house at the rear which dates from around 1500. It is Grade II* listed and was a timber-framed merchant's house and then for many years a costume museum before opening as a pub and restaurant in 2017. The central entrance leads into a stone-flagged passage, and on each side is a small, elegant room. The corridor opens out at the back into the medieval part of the house; here is a bar area with replica Victorian bar fittings which has an old beamed ceiling and an outstanding long, timber-framed window. The ground floor is furnished with chairs and settees and upstairs there is a restaurant room with an impressive exposed rafter ceiling and good views. Overall it has been converted with care and attention, reflecting the magnificence of the building, with an attractive outside area. There is a full restaurant menu upstairs and a simpler menu downstairs, along with real ales and ciders.

Anne of Cleves ★

Part of the medieval house, Grade II*-listed, dates back to 1327 when it was home to monks. The house was gifted to Anne of Cleves by Henry VIII as part of her divorce settlement. It is now a popular hostelry following sympathetic conversion in 1996. It has stone-flag floors, exposed beams and wall tapestries. Real ales and meals.



Oadby

Stoughton Grange, Gartree Road, , Oadby, LE2 2FB

Tel: (0116) 272 0852

Email: cowandplough@steamin-billy.co.uk

Website: <https://steamin-billy.co.uk/foodpubs/cowandplough/>

Cow & Plough ★

Situated in rambling former dairy farm buildings with a number of rooms and a conservatory. The pub is decked out with brewery memorabilia. It is home to Steamin' Billy beers and real cider is available in summer. Pub meals and restaurant.



Lincolnshire

Bourne

25 North Street, , Bourne, PE10 9AE

Tel: (01778) 426819

Email: smiths.bourne@redcatpubcompany.com

Website:

<https://www.redcatpubcompany.com/pubs/lincolnshire/smithsofbourne>

Smith's ★

Successful and imaginative conversion by Knead Pubs of a three-storey family grocer's shop to a multi-roomed public house of character. Beautifully converted with little rooms and old features. The walls are adorned with mirrors and interesting old signs and posters. Large patio and garden. Annual beer festival and other events.



Lincoln

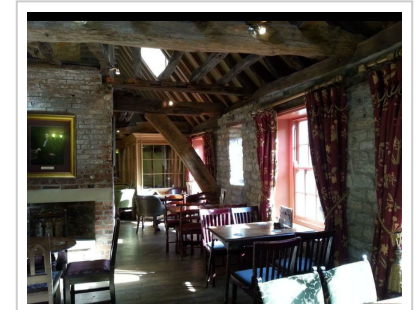
29 Steep Hill, , Lincoln, LN2 1LU

Tel: (01522) 523020

Listed Status: II

Widow Cullen's Well ★

This shop was converted to a pub and its unusual name stems from the legend that the old well nearby belonged to Old Widow Cullen and that she allowed her neighbours to use it. The Grade II-listed timber-framed building dates from the C14 and has a wealth of beams and timbers including a curved brace over the front bar. There is a second bar beyond the central brick stack fireplace that dates from C17. Sam Smiths real ale is served along with lunchtime meals.



Spalding

1 Sheep Market, , Spalding, PE11 1BH
Tel: 07866 045778

Stamford

12 Saint Pauls Street, , Stamford, PE9 2BE
Tel: (01780) 753800
Email: tobie@kneadpubs.co.uk
Website: <http://www.kneadpubs.co.uk/our-pubs/the-tobie-norris>

Priors Oven ★

This Grade II* listed building was part of the Priory of Spalding and is believed to be c.1230 in origin. Due to its unique shape it has long been known as The Oven or The Prior's Oven. Formerly it is said to have been a lock-up for the monks and the name is derived from its shape, not from its former uses, the last being a bakery. It became an interesting micropub in 2013, consisting of a single vaulted room on the ground floor with eight concentric arches that houses the bar. A spiral stone staircase leads to an upper room of similar proportions but without the vaulting. It is closed Monday to Wednesday and opens late afternoon on Thursdays and Fridays. Real ales and ciders are served.



Priors Oven bar ceiling

Tobie Norris ★

Parts of this Grade II*-listed stone building date back to C17. In 1617 it was bought by Tobias Norris and used as a bell foundry. It was converted into a pub in 2005 by Knead Pubs. It has seven rooms over two floors which have been restored to their former glory. A fabulous conversion. Real ales and food, including pizzas.



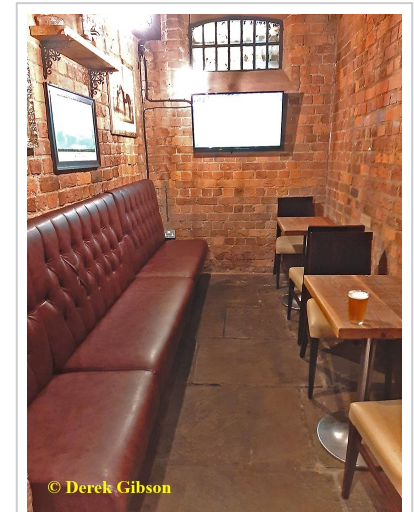
Merseyside

Liverpool

1 Campbell Sq, City Centre, Liverpool, L1 5FB
Tel: (0151) 707 2372
Email: Info@thebridewellpub.co.uk
Website: <https://thebridewellpub.co.uk/>
Listed Status: II

Bridewell ★

A Grade II-listed building that dates from mid C19 when it was a 'bridewell', meaning a jail. It was a police station until the 1930s and converted to pub use in 2003. The pub retains many of the building's original features such as vaulted brick ceilings and a stone-flagged bar area. The plain brick cells provide the seating area for the downstairs bar and will be unusual surroundings for drinking, for most people. There is an outdoor area inside the wall at the front. Real ales but no food.



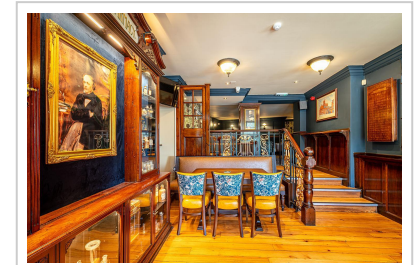
Bridewell jail cell

Liverpool

2 St Johns Lane, City Centre, Liverpool, L1 1HF
Tel: (0151) 709 5100
Email: drduncans@mhalg.com
Website: <https://www.doctorduncansliverpool.com/>

Doctor Duncan's ★

The Grade II-listed former Pearl Insurance Regional Office has a stunning ceramic tiled entrance and an impressive Victorian interior with four distinct drinking areas. The entrance and the green tiled room are the main attractions. The tiled room is front right and is particularly handsome. Outstanding tilework and medical memorabilia are throughout, commemorating the first chief medical officer of Liverpool. Real ale and meals.



Liverpool

7 Lime Street, City Centre, Liverpool, L1 1RJ

Tel: (0151) 709 6825

Website: <https://www.jdwetherspoon.com/pubs/the-north-western-liverpool/>

Listed Status: II

Liverpool

2-8 James Street, City Centre, Liverpool, L2 7NE

Tel: (0151) 351 6720

Email: bookings@theoldbankliverpool.co.uk

Website: <http://theoldbankliverpool.co.uk/>

Liverpool

301 Aigburth Road, Aigburth, Liverpool, L17 0BJ

Tel: (0151) 728 9724

North Western ★

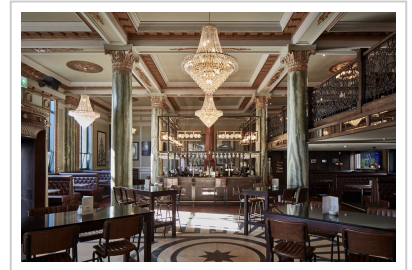
This was originally the luxurious North Western Hotel with 330 rooms, opened in 1871 and built to serve Lime Street station. Its impressive architecture is now Grade II listed. It closed in the 1930s and remained empty until 1996, when upper floors became halls of residence and the ground floor a pub.

Wetherspoon's reopened in 2015 after a major refurbishment which retains the grandeur of the original building, including much wood panelling. The high quality work is complemented with plaques, posters, old photographs and railway memorabilia. There are real ales and meals.



Old Bank ★

A spectacular building from around 1920 that was a branch of the National Bank. It was relaunched in 2018 as a stylish bar making enterprising use of a fine space. There is an island bar, tiled dance floor and sectioned ceiling held up by marble columns with decorative capitals. The seating is in the former banking hall and on a mezzanine, with some drinking booths. Real ales and meals.



Old Bank Alehouse ★

Built c.1900 as a branch of the Bank of Liverpool, taken over by Martins Bank in 1918, bought by Barclays in 1969 and closed as a bank in 1999. It became a restaurant before opening as a pub in 2012. It is an imposing corner building with a cupola and inside there is one large area with a raised, gallery-like section. The bar has quality fittings, there is old panelling on one wall, stained glass, a grand ceiling with chandeliers and fine marbled columns, an overall scheme that lets the old decor speak for itself. The pub is Grade II-listed and serves real ales but not food.



Old Bank exterior

Norfolk

Norwich

45-51 London Street, , Norwich, NR2 1HU

Tel: (01603) 358640

Email: norwichbookings@cosyclub.co.uk

Website: <https://cosyclub.co.uk/location/norwich/>

Thorpe Market

Cromer Road, , Thorpe Market, NR11 8TZ

Directions: Signposted on left of A149 Cromer to North Walsham Rd SE of Thorpe Market. Look for hanging sign, lit at night.

Tel: (01263) 832010

Email: office@theguntonarms.co.uk

Website: <https://www.theguntonarms.co.uk/>

Thorpe Market

Station Road, , Thorpe Market, NR11 8UE

Directions: Signpost on main road S of Thorpe Market village, head E on Station Rd

Tel: (01263) 586858

Email: office@suffieldarms.com

Website: <https://www.suffieldarms.com>

Cosy Club ★

This occupies the restored main hall of the former National Provincial Bank. It's a stunningly elegant, spectacular building, especially the centrepiece that is the original huge glass domed ceiling. Several more intimate spaces have been created as well with three beautiful dining rooms, including an old bank vault. The pub serves meals all day but there is no real ale or cider.

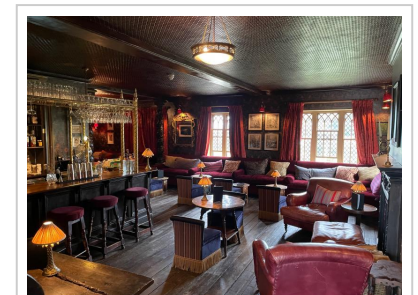
Gunton Arms ★

A hotel and bar that started as the shooting lodge to Gunton Hall and is set in beautiful Gunton Park featuring tasteful, comfortable furnishings and log fires, in the style of a country house. The accommodation and the large bar have views across the thousand acres of historic parkland which has herds of deer. It was bought by an art dealer and his artist wife and radically transformed into a characterful pub, restaurant and hotel in 2011. They have created a visual treat that includes a vaulted dining room and an old-style bar that encourages drinkers to enjoy the charm of the building alongside diners. There are rooms, real ales and meals.



Suffield Arms ★

This country pub was saved from conversion to housing in 2015, when it was purchased and refurbished. The extensive refit has created a large bar at the front that is a delight and has a traditional, rustic feel. There is a tapas bar at the back with another area at the far end and a further room. Upstairs is a cocktail lounge and there is seating outside. The walls are adorned with art, some of it imaginative and provoking, which, whilst not to everyone's tastes, is at least interesting and impactful. The pub serves meals and real ales.



Suffield Arms bar

Warham All Saints

69 The Street, , Warham All Saints, NR23 1NL

Directions: 2 miles SE of Wells

Tel: (01328) 710547

Email: info@warhamhorseshoes.co.uk

Website: <https://warhamhorseshoes.co.uk>

Three Horseshoes ★

It was one of Norfolk's most unspoilt alehouses for nearly 300 years, occupying just the block bearing the pub sign. Until the 1960s it comprised the current bar plus a snug, now the servery. This room has a quarry-tiled floor, dado panelling and scrubbed benches. The metal grilles in the windows were once a common feature but are now rarely seen. The cupboards in the servery are old but the shelving is relatively recent. A hole was cut between the bar and former snug to create a small counter and newer rooms have been created from expansion into adjacent buildings, including the former general store. Care and flair has gone into the design so that the additions look old and have appealing, traditional furniture. The piano room has no piano, the pool room has no pool table and there is a Norfolk Twister game hanging from the ceiling.



Public Bar

North Yorkshire

Burythorpe

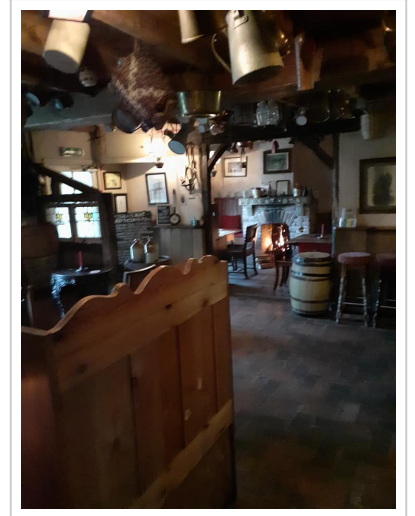
Main Street, , Burythorpe, YO17 9LJ

Tel: (01653) 658700

Website: <https://oldmillinns.co.uk/bay-horse-burythorpe>

Bay Horse ★

A formerly modernised interior has been transformed back to the past and is now a pub full of character with a number of small rooms. It is as homely as a family farmhouse with open fireplaces , traditional furniture and a tiled floor.



Harrogate

Station Parade, , Harrogate, HG1 1TE

Tel: (01423) 501644

Email: enquiries@harrogatetap.co.uk

Website: <http://www.harrogatetap.co.uk>

Harrogate Tap ★

Overlooking Platform 1 of Harrogate station, though accessed from outside, is this impressive transformation of a neglected railway building into a fine pub of style. There is a long bar room with a snug at one end. The decor features dark wood panelling, a tiled floor and tasteful Victorian-style fittings. A range of cask ales and cider. Bar snacks are available.



Harrogate

4 Royal Baths, , Harrogate, HG1 2WH

Tel: (01423) 877010

Email: p893@jdwetherspoon.co.uk

Website: <https://www.jdwetherspoon.com/pubs/all-pubs/england/north-yorkshire/the-winter-gardens-harrogate>

Knaresborough

19 Market Place, , Knaresborough, HG5 8AL

Tel: None

Email: info@blindjackspub.co.uk

Website: <https://blindjackspub.co.uk>

Listed Status: II

York

2-4 High Petergate, , York, YO1 7EH

Tel: (01904) 612078

Email: gm@thefatbadgeryork.com

Website: <https://www.thefatbadgeryork.com>

Winter Gardens ★

An outstanding Grade II-listed building which contained Harrogate's former Royal Baths, sympathetically converted by Wetherspoon's. The Winter Gardens were built so that visitors to the Royal Baths could relax and stroll in any weather. A magnificent establishment in which lots of great drinking spaces have been skilfully created. There is a Hollywood-style staircase to boot. A wide range of ales, ciders and meals.



Blind Jack's ★

An excellent conversion of a Grade II-listed shop into a multi-roomed pub of character. There are bare brick walls, wooden floorboards and panelling which create a cosy ambience and lively banter. It's an award-winning community ale house. No meals. Open only in the evenings on Mondays, Tuesday and Thursdays.



Fat Badger ★

A tasteful, recent conversion of a former hotel that was originally a house which became a dentistry practice after 1900. It has a number of small rooms serving real ales. There is a garden next to the city walls with views of York Minster. Meals and accommodation are available. Grade II-listed.



York

48 Stonegate, , York, YO1 8AS

Tel: (01904) 289848

Email: info@tremblingmadness.co.uk

Website: <https://www.tremblingmadness.co.uk/stonegate.html>

Listed Status: II*

York

6 Patrick Pool, , York, YO1 8BB

Tel: (01904) 635464

Email: info@pivni.co.uk

Website: <http://pivni.co.uk>

Listed Status: II*

House of The Trembling Madness ★

A pub set in a small, stunning old drinking hall with a beamed timber roof and lots of character, including an odd collection of stuffed animals. Parts of the building date from early 1600s and it is Grade II* listed. The pub is above a bottled beer shop and offers real ales and ciders. There is food.



Bar counter & ceiling

Pivni ★

A pub in a beautiful three-storeyed timber-framed building dating to the 1600s and Grade II*-listed. Parts of it may be even older. The pub serves cask ales and ciders. Bar snacks including local pies. Operated by Pivovar.



York

4 Fawcett Street, , York, YO10 4AH

Tel: (01904) 624574

Email: seahorseYork2012@gmail.com

Website: <https://samuelsmithshotels.co.uk/sea-horse-hotel-york/>

Listed Status: II

Sea Horse Hotel ★

Revamped former open-plan pub refurbished by Sam Smith's into a traditional pub of four small rooms. There's a wood-panelled public bar and a comfortable parlour room. To the rear, there's a larger, cosy bar and a dining room. Each room offers a different environment and contains interesting photos of yesteryear. An exemplary journey back in time. Real ale, meals and accommodation. Grade II-listed.



York

Railway Station, Station Road, , York, YO24 1AB

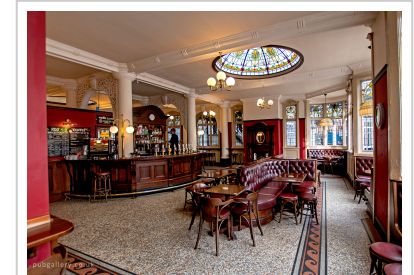
Tel: (01904) 659009

Email: enquiries@yorktap.com

Website: <http://www.yorktap.com/>

York Tap ★

Conversion of the former Victorian tea rooms on Grade II*-listed York station, opened by Pivovar. The ornate ceiling, Art Deco stained glass windows and ceiling domes create an award-winning backdrop to the circular island bar with plenty of cask beers and real cider from which to choose. These are the focus, rather than food.



Bar area east side

North-East Wales

Llangollen

Dee Lane, , Llangollen, LL20 8PN

Directions: On town side, W of the Llangollen Bridge

Tel: (01978) 869555

Email: corn.mill@brunningandprice.co.uk

Website: <http://www.brunningandprice.co.uk/cornmill/>

Overton-on-Dee

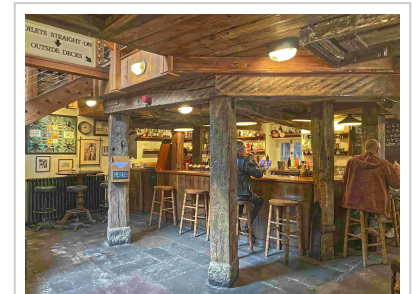
21 High St, , Overton-on-Dee, LL13 0DT

Directions: In village centre (on A528)

Tel: (01978) 784727

Corn Mill ★

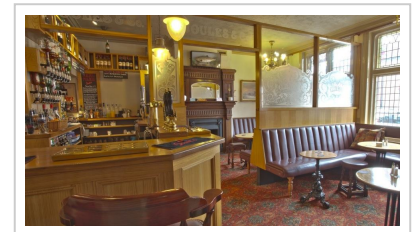
A splendidly converted flour mill incorporating the striking water wheel and the gear equipment from the mill, which is suspended from the ceiling. A series of open-plan rooms is spread over three levels with bars on the first two floors. The large outside drinking area is well designed and has great views across the river Dee to the restored steam railway station. Primarily a restaurant with the main drinking areas being the ground floor bar, which has a wooden counter and beamed ceiling, or outside. There is a pleasing unity of style of the former function of the building with its contemporary character. There is real ale and cider and meals are served all day.



Corn Mill, Llangollen main bar by Michael Slaughter LRPS low

White Horse Inn ★

This attractive, red-brick, Tudor Revival building is Grade II-listed and part of the impressive Joules' estate. The design features frosted and latticed windows, pristine wood partitioning and restored fireplaces, two with wood-burning stoves. A former pantry, coal shed and wash house to the rear have been converted into dining spaces. Upstairs is a large function room and outside a pleasant courtyard. Real ales and meals. Closed Mondays and late opening Tuesdays.



North-West Wales

Conwy

1 Lancaster Square, , Conwy, LL32 8HT
Tel: (01492) 573741
Email: info@thebankofconwy.co.uk
Website: <https://www.thebankofconwy.wales/>
Listed Status: II

Llandudno

7 Gloddaeth Street, , Llandudno, LL30 2DD
Tel: (01492) 863920
Email: p1013@jdwetherspoon.co.uk
Website: <https://www.jdwetherspoon.com/pubs/all-pubs/wales/conwy/the-palladium-llandudno>
Listed Status: II

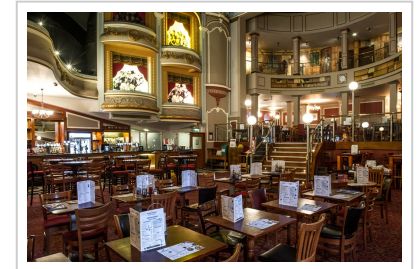
Bank of Conwy ★

The pub is in a former bank which is Grade II-listed for its special architectural interest as a prominently-sited and well-preserved small inter-war bank in free-classical style. The conversion is more imaginative than many.



Palladium ★

A huge Wetherspoon's converted from a theatre built in 1920 and Grade II-listed as an impressive Baroque-style entertainment building. The boxes and upper seating can still be seen, although not used, and the walls are adorned with theatrical memorabilia including original programmes bearing the names of the stars of the day. Wide range of ales, ciders and meals.



Northamptonshire

Northampton

199 Kettering Road, , Northampton, NN1 4BP

Directions: Near Racecourse

Tel: (01604) 619285

Email: paul@theoldeengland.com

Olde England ★

An end of terrace Victorian building converted from a shop to a pub over three floors. The main bar is on the ground floor. There is a curved staircase to the cellar with low lighting and seating and a stairway to the top bar. There are sturdy wooden tables and chairs and a real fire in winter. A range of ales and ciders. No meals. Lunchtime opening only at weekends.



Northern Ireland

Belfast

42 Botanic Avenue, , Belfast, BT7 1JQ

Tel: (028) 9024 9276

Email: info@thebelfastempire.com

Website: <https://www.thebelfastempire.com/>

Empire Bar ★

This venue is sited in a Grade B2-listed former Irish Evangelic Temple. Upstairs is the Empire Music Hall, still hosting live events, and deep in the vaults is the Empire Bar. This too has regular entertainment, when allowed.

Northumberland

Blanchland

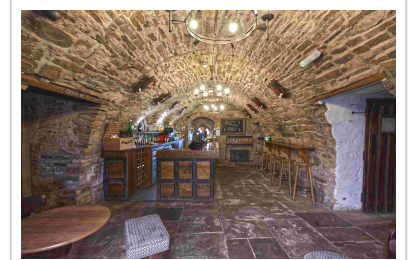
The Square, , Blanchland, DH8 9SP

Tel: (01434) 677100

Website: <http://www.lordcrewearmsblanchland.co.uk>

Lord Crewe Arms ★

A special building in a magnificent setting, this has operated as the village pub and hotel since C18 and incorporates the west cloister of Blanchland Abbey, Grade II* listed. It has many historic rooms. The crypt bar, in the basement of a tower, is a medieval barrel-vaulted room with thick stone walls, lit by candles, in which the bar counter blends in to create a spectacular space. The Hilyard Room has a large segmental-arched fireplace, medieval moulded ceiling beams, a stone doorway and a flagstone floor. The reception room has a large chamfered segmental-arched fireplace and two stone doorways with depressed arched heads and flagstone floors. There is a stone staircase to a further room. The 2014 refurbishment and design highlight the historic features and modern fittings, such as superb large hanging lights, fit well to create an atmospheric whole in harmony with its surroundings.



lord crewe bar

Blyth

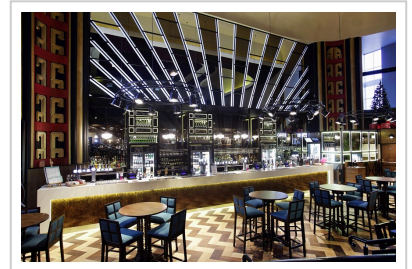
14, Union Street, , Blyth, NE24 2DX

Tel: (01670) 356830

Website: <http://www.jdwetherspoon.com/pubs/the-wallaw>

Wallaw ★

A superb conversion by Wetherspoon's of a Grade II-listed 1930s Art Deco cinema. There is marvellous, massive glasswork behind the bar counter and an original vintage film projector at the main entrance.



Corbridge

Market Place, , Corbridge, NE45 5AW

Tel: (01434) 632905

Email: drinks@thepele.co.uk

Website: <https://www.thepele.co.uk/>

Pele Corbridge ★

Next to the church, this small pub occupies a Grade I-listed Pele Tower built between 1300-1350 for the Vicar of Corbridge. Fortified tower houses are characteristic of the borderlands of England and Scotland and this one retains a significant amount of original features and is well-preserved. The pub's fittings are well integrated with the old stone building and occupy both the ground and first floors with a balcony in the roof space. It is an unusual and interesting place in which to drink.

Nottinghamshire

Newark

46 Stodman Street, , Newark, NG24 1AW

Tel: (01636) 918121

Website:

<https://www.redcatpubcompany.com/pubs/nottinghamshire/theprince Rupert>

Listed Status: II

Nottingham

16 St James's Street, , Nottingham, NG1 6FG

Tel: (0115) 941 1048

Email: info@maltcross.com

Website: <http://maltcross.com>

Listed Status: II

Nottingham

High Pavement, Lace Market, Nottingham, NG1 1HN

Tel: (0115) 958 6081

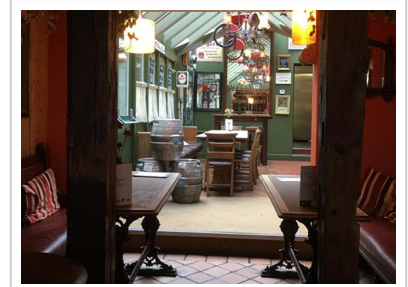
Email: nottingham@pitcherandpiano.com

Website: <http://www.pitcherandpiano.com/where-are-we/nottingham>

Listed Status: II

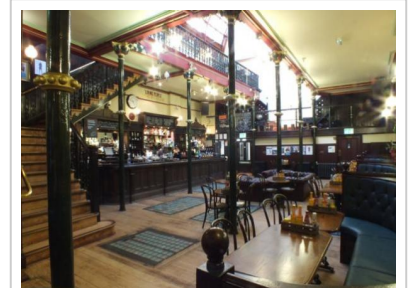
Prince Rupert ★

This Grade II-listed half-timbered building dates to 1400s and was licensed soon after being built. Lots of flair and imagination has gone into this magnificent restoration by Knead Pubs. It has several rooms and snugs on two levels, where the beamed, vaulted ceiling of the original house can be seen. Real ales and ciders, pub food and pizzas available.



Malt Cross ★

A Grade II-listed Victorian music hall, built 1877, that retains major original features. A gallery on cast-iron columns and balustrade overlooks the ground floor from all sides, with two lower floors opened up after renovation, including caves carved out of the soft stone under the city. The roof is glass and wood, which resembles the upturned hull of a boat and in which no nails are used. A range of ales and meals.



Pitcher & Piano ★

This is a highly attractive conversion of a Grade II-listed chapel built in Gothic Revival style. It retains many ecclesiastical features, including copious stained glass. A mezzanine has been sensitively installed, accessed by an attractive spiral staircase. Operated by Marston's, the pub serves real ales and meals.



internal

Southwell

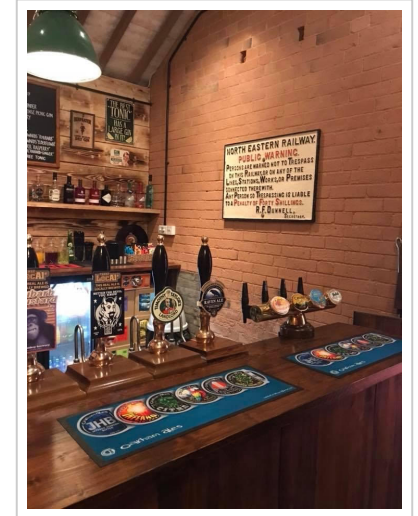
25 Station Road, , Southwell, NG25 0ET

Tel: (01636) 814953

Email: finalwhistlepub@hotmail.co.uk

Final Whistle ★

A characterful Everard's pub at the end of a disused railway line, now a walking trail. A comfortable, multi-roomed pub with a railway theme and full of memorabilia. The courtyard garden has been laid out like a mock station. A large range of real ales and ciders but not meals.



Oxfordshire

Banbury

2-3 North Bar Street, , Banbury, OX16 0TB
Directions: next to ODEON cinema and Banbury Cross
Tel: (01295) 265466
Email: thechurchhousebanbury@hotmail.co.uk
Website: <http://www.thechurchhousebanbury.co.uk>
Listed Status: II

Fyfield

Main Rd, , Fyfield, OX13 5LW
Tel: (01865) 390585
Email: info@whitehart-fyfield.com
Website: <https://www.whitehart-fyfield.com>

Oxford

3a St Michael's Street, , Oxford, OX1 2DR
Tel: (01865) 721523

Church House ★

Built as church rooms in 1905 and later a theatre, this has been a pub for twenty years. Grade II-listed it consists of a large room with a part-glazed barrel-vaulted ceiling and a large gallery from which to view the whole room. Has a sizeable entrance hall and another room on the first floor with an oriel window. The layout and impressive bar fittings make good use of the fine setting.

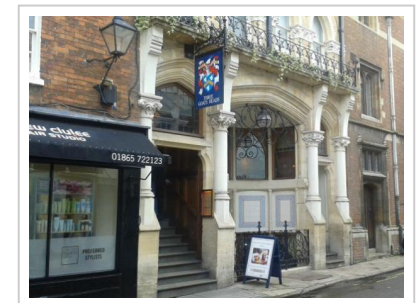


White Hart ★

The White Hart is a splendid 15C former almshouses and chantry priest's house built in the reign of Henry VI and owned by St John's College since 1580. It is said St John's retains the right to occupy the building if driven out of Oxford in times of pestilence. The stunning interior features flagstone floors, a massive fireplace and a minstrel's gallery and a fine renovation in 1960s exposed the arch-braced roof truss of the great hall. The pub retains some feel of a village local but focuses on food that is from its own garden and local suppliers where possible. There are large gardens. It is Grade II* listed and serves real ales and ciders and meals.

Three Goats' Heads ★

Sam Smith's only pub in Oxford opened in 1987 having been a pizza restaurant and previously a corn merchant. It is unusual, with steps up from the street to the upper bar and steps down to the basement bar. The bars are linked internally by another staircase. Upstairs is more plush than the basement, which is open only at busy times. The pub has an impressive interior with an opulent ceiling, good tiling and massive, ornate columns. There are architectural drawings of the building on the walls, as well as three goats' heads. The pub serves real ale and meals.



Shropshire

Bridgnorth

Severn Valley Railway Station, Hollybush Road, , Bridgnorth, WV16 5DT

Directions: Follow signs for SVR

Tel: (01746) 760920

Email: samantha.hayward@svrlive.com

Website: <https://www.svr.co.uk/>

Listed Status: II

Bridgnorth

West Castle Street, , Bridgnorth, WV16 4AD

Tel: (01746) 768863

Email: mariewhelan01@hotmail.com

Website: <https://theshakespearebrid.wixsite.com/website-1>

Listed Status: II

Ludlow

13 High Street, , Ludlow, SY8 1BS

Tel: None

Email: clive@clipvine.co.uk

Railwayman's Arms ★

A bar located in the original licensed refreshment room on platform 1 of the Grade II-listed station with an interesting collection of railway memorabilia. It opened in 1861 a year before the railway itself and has never closed, even when the line was shut down in 1963. When the heritage line reopened it was the focal point of celebrations. It is an ideal place to soak up the atmosphere of the steam railway.



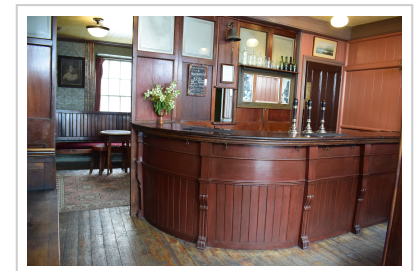
Shakespeare Inn ★

Originally licensed in 1792 and now a Joules house following extensive and sympathetic refurbishment. The central bar serves both sides which have interesting nooks and crannies. Cosy corners and snugs are warmed by a log fire. The function room has been restored with reclaimed oak panelling. There is much rowing memorabilia. A lot of effort has gone into retaining a pubby feel, which impressed enough for it to win the award for outstanding refurbished street-corner local in the 2020 CAMRA Pub Design Awards.



Blood Bay ★

One of Ludlow's most intact late-C19 retail properties, with late Victorian features. Glazed mahogany screens create three drinking spaces: a public bar on entering, a tiny snug to the right and a back bar. There are an old curved mahogany bar and a back bar serving hatch, brass-mounted cut-glass ceiling lights, old seating with drinking ledges and authentic beer engines that help to recreate what it might have been like to drink in the Victorian pubs of Ludlow. Open evenings only during the week, serving real ale but no meals.



Ludlow

14 Corve Street, , Ludlow, SY8 1DA
Tel: None

Ludlow

8 Church Street, , Ludlow, SY8 1AP
Tel: (01584) 547368
Email: bookings@roseandcrownludlow.com
Website: <https://www.theroseandcrownludlow.com>

Telford

Victorian Town Museum, Blists Hill, Telford, TF7 5DU
Tel: (01952) 433424
Email: tic@ironbridge.org.uk
Website: <https://www.ironbridge.org.uk/explore/blits-hill-victorian-town/>

Dog Hangs Well ★

A sympathetically recreated parlour pub in a Georgian townhouse, opened in 2015. A small corridor leads to a lobby which connects two main rooms. At the back is the kitchen bar with a solid oak counter and adorned with pub artefacts, adding up to lots of different, cosy spaces. Real ale and cider but no meals. Restricted opening on Thursday, Friday and Saturday evenings only. Hard to find: look for the No. 14 door and if the lamp above is lit, the pub is open.



Rose & Crown ★

Hidden away in a courtyard, this is probably Ludlow's oldest pub. It has medieval origins with the rear wing dating from the C15, while a two-light window in the rear wall probably dates from the C14. In due course it developed into a coaching inn. Grade II-listed. It has been restyled to stunning effect by Joules to create a large pub with intimate areas. A fireplace has been exposed and beams revealed with lots of old and new wood. Flooring is mainly oak, with quarry tiling. The bar is wood panelled and contains hidden mice that you are invited to search for, created by Robert 'Mouseman' Thompson. To the rear is the medieval wall which boasts a mullioned window with trefoil. Real ales and pub meals.



New Inn ★

This pub is inside Blists Hill Victorian Town Museum and can only be accessed when the museum is open. It was relocated from Walsall and is a rare example of a once-common design. The multi-roomed historic interior has been well conserved. It serves real ale at lunchtimes only. Museum entrance fee is payable for access.



Bar

Somerset

Minehead

Townsend Road, , Minehead, TA24 5RQ
Directions: 2 minutes from town centre
Tel: (01643) 702009
Email: info@kildarelodge.com
Website: <http://kildarelodge.com>
Listed Status: II

Portishead

59 Newfoundland Way, , Portishead, BS20 7FP
Tel: (01275) 848685
Email: portishead@hall-woodhouse.co.uk
Website: <http://hall-woodhouseportishead.co.uk/>

Kildare Lodge ★

This cracking local is not far from the town centre in a Grade II*-listed building with a bar, two lounges and a dining room. It was built in early C20 in Arts & Craft style as a doctor's surgery and house and was voted the best house in Britain in 1907. It later became a hotel. Many original fittings survive including an inglenook fireplace and curved wooden doors to the bar. Real ales, real cider, meals and accommodation all available.



Exterior

Hall & Woodhouse ★

Constructed by Hall & Woodhouse with great verve out of 28 shipping containers and a winner of a CAMRA pub design award in 2013. The building is split into sections over two floors, including the common room with soft seating and fires. The dining room is upstairs with an open kitchen. it is a place to watch life on the water go by. Real ale and meals.



Bar

South Yorkshire

Doncaster

Station Court, , Doncaster, DN1 1PE

Directions: Doncaster Station, Platform 3b

Tel: 07999 874660

Email: orders@thedraughtsmanalehouse.co.uk

Website: <http://www.thedraughtsmanalehouse.co.uk/>

Sheffield

Alma Street, Kelham Island, Sheffield, S3 8SA

Directions: Inside Kelham Island Industrial Museum.

Tel: 07542 871673

Email: themillownersarms@gmail.com

Sheffield: Central

44 Garden Street, City Centre, Sheffield: Central, S1 4BJ

Tel: None

Draughtsman Alehouse ★

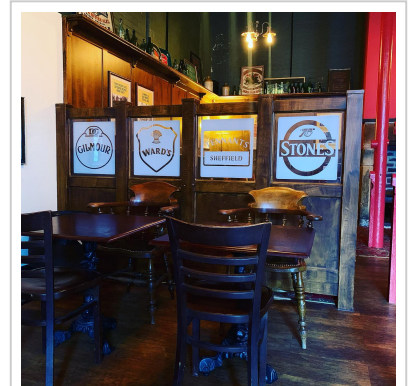
Located on platform 3b of Grade II-listed Doncaster station in a former Victorian buffet bar. It retains fantastic floor to ceiling Victorian tiling, and shows mounted draughtsman's drawings of steam locomotives, reflecting that the new work has been carefully done to contrast with the old.



Alcove with tiling

Millowners Arms ★

The pub was created in a derelict storeroom and is part of the Sheffield Industrial Museum. It can be accessed separately to the museum. The splendid design is of a typical old pub from the 1970s, with a display of Sheffield brewing heritage, nicotine stained walls and even a telephone box outside. The doors and windows are etched, and there are period radiators and light fittings and a Yorkshire dartboard. Open full-time as a pub serving six real ales and food.



Perch ★

The taproom of the Dead Parrot brewery and a respectful, imaginative conversion of former industrial and office premises that shows good detailing and design. The decor is perhaps 'industrial chic' with careful use of contemporary materials resulting in a stylish and comfortable space, with large settees. The brewery is behind the bar, at the side of the courtyard. It is open late afternoon and evenings all week and at lunchtimes on weekends. Meals and real ales available.



Perch main bar

Sheffield: North

279 Whitehouse Lane, Walkley, Sheffield: North, S6 2WA

Tel: (0114) 233 0015

Email: info@theblindmonkey.co.uk

Website: <https://donvalleybrewery.co.uk/the-blind-monkey/>

Blind Monkey ★

After extensive renovation this pub now has four separate rooms. Decor is from a variety of sources, most of it aged. The bar area benefits from a great deal of design care and is superbly well done. Real ale and meals available.

Front left room. Photo by Michael

Image not found or type unknown

*Front left room. Photo by Michael
Slaughter LRPS*

Staffordshire

Burton upon Trent

24 Bridge Street, , Burton upon Trent, DE14 1SY
Directions: On A511, at town end of Trent Bridge.
Tel: (01283) 536596
Email: pub@burtonbridgebrewery.co.uk

Codsall

Chapel Ln, , Codsall, WV8 2EJ
Tel: (01902) 847061
Listed Status: II

Burton Bridge Inn ★

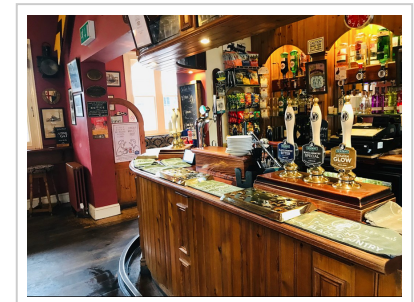
This C17 pub fronts the Burton Bridge Brewery and opened in 1982. it has two rooms served from a central bar offering ales from the brewery at the rear. The multi-roomed design shows a great treasuring of old pub values. At the front are two small rooms separated by a fireplace, one housing the bar and with wooden pews. The partly-divided back room features oak beams and wood panelling. A small function room and an excellent skittle alley are upstairs. The pub was joint Best Refurbishment Winner CAMRA Pub Design Awards in 2001.



Burton Bridge Inn back bar

Codsall Station ★

Sensitively converted from the waiting room, offices and stationmaster's house, the Grade II-listed building comprises a bar, lounge, snug and conservatory and displays worldwide railway memorabilia. Steps lead to the outside drinking area overlooking the working platforms.



Stafford

14 Bridge Street, , Stafford, ST16 2HL

Tel: (01785) 222941

Email: p257@jdwetherspoon.co.uk

Website: <https://www.jdwetherspoon.com/pubs/the-picture-house-stafford/>

Listed Status: II

Stoke-on-Trent

3 Goodson Street, Hanley, Stoke-on-Trent, ST1 2AT

Tel: (01782) 213996

Email: thewoodman@caldmoretaverns.co.uk

Picture House ★

A Wetherspoon conversion of a 1914 Grade II-listed cinema that respects the building's heritage. It retains original, ornate features such as the entrance foyer, the ticket office and projection room. There is a barrel-vaulted ceiling, which has decorative bands of plaster and other flourishes and embossing highlighted. The balcony is retained as a drinking area. Posters from the golden age of cinema adorn the walls and films are still shown on occasion behind the bar. At the front there is a decorative wrought-iron canopy, which has stained-glass letters spelling out Picture House. An outdoor drinking area overlooks the river. There are meals and real ales.

picture house exterior

Image not found or type unknown

picture house exterior

Woodman ★

This large Caldmore Taverns pub in the city centre re-opened in 2018 after a long closure. It is a typical, sturdy, red brick building with its main door on the corner that has an interesting picture in plaster above, of a woodman in a forest. Internally, four different areas extend around the bar and a snug nestles behind. The pub has been rejuvenated to a high standard to create a traditional hostelry in an area otherwise lacking. The sympathetic restoration has used much wood and other materials to cherish an attractive and characterful pub. Real ales, real ciders and snacks are served.

Stone

Crown Street, , Stone, ST15 8QN

Tel: (01785) 550450

Email: crownwharf@joulesbrewery.co.uk

Website: <https://www.joulesbrewery.co.uk/our-taphouses/our-pub-list/crown-wharf-stone>

Tamworth

Lichfield Street, , Tamworth, B79 7QQ

Tel: (01827) 767707

Email: giftshop@moathouse.com

Website: <https://moathouse.com>

Listed Status: II*

Crown Wharf

A new, enormous canalside pub in Joule's home town taking inspiration from historic canal warehouse architecture. It is a robust building, built of traditional brick, and making much use of reclaimed materials and fittings. The large central hall continues the warehouse theme, with smaller, more intimate spaces opening off it to ensure there is also a pubby feel. An impressive staircase leads up to a first-floor function room and to a theatre. There is extensive wood panelling, including some from renowned craftsman Robert (Mouseman) Thompson and you can search for his carved mice. The whole is furnished to a high standard with lots of knick-knacks and portraits of the Joules family. The excellent, striking development includes a heritage centre and a meeting space in a building that is a replica of the Coopers Tavern in Burton and adds considerably to the canalside buzz of the town. It was a worthy winner of CAMRA's design awards in 2021. There are real ales and meals.



Main space

Moat House ★

Dating from 1572, this spectacular red brick Tudor mansion is Grade II* listed and features elaborate chimneys and five Dutch-style stepped gable ends. Decor keeps the stateliness intact with features such as a wide stone fireplace in the central room. The bar room is at one end of the building and has original features such as flagstone floors, a fireplace with a Tudor arch, old panelling and Tudor-headed doors. The library at the other end is an additional area and function room. The bar and beer garden for public use are open only from Friday evening to Sunday evening, when it shuts at 8pm. There are real ales and ciders, and bar snacks are available.



Bar

Suffolk

Bury St. Edmunds

Abbeygate St, , Bury St. Edmunds, IP33 1UL

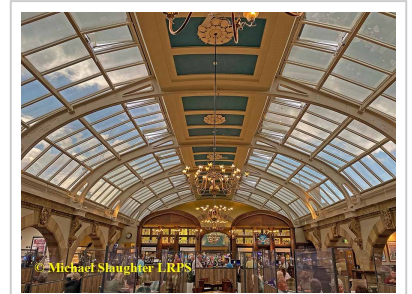
Tel: (01284) 727300

Email: p6382@jdwetherspoon.co.uk

Website: <https://www.jdwetherspoon.com/pubs/all-pubs/england/suffolk/the-corn-exchange-bury-st-edmunds>

Corn Exchange bar ★

Built in 1860s, the Grade II-listed Corn Exchange was originally a provisions market. In the 1960s it was nearly demolished in favour of more shops. A compromise was reached and a new floor inserted. The building has been used for wedding receptions, concerts and other events and the first floor has the bar, run by Wetherspoon's. The front, designed as a single storey, has a giant hexastyle Ionic portico with a pediment decorated by figures. The interior features semi-circular stone arches in alternating bands of light and dark stone surmounted by a dentil cornice front and back. Ornate keystones carry agricultural motifs, such as wheatsheaves and rams' heads, and the central keystone on each side is decorated with flowers and plants. The glass roof has cast-iron glazing bars and a decorated central plaster panel. The overall effect is stunning, a dramatic and airy place to have a drink and to admire the building's merits.



Corn Exchange main bar

Ipswich

7 Wherry Quay, , Ipswich, IP4 1AS

Tel: (01473) 259952

Email: office@isaaclord.org

Website: <https://isaaclord.org/>

Listed Status: II*

St. Peter South Elmham

St. Peter's Hall (follow signs from A144 or B1062), , St. Peter South Elmham, NR35 1NQ

Tel: (01986) 782288

Email: enquiries@stpetershallbungay.co.uk

Website: <https://www.stpetersbrewery.co.uk/st-peters-hall>

Isaacs ★

This Grade II*-listed site is a former brewery maltings including a splendid historical kiln, originally opened as a pub by Tolly Cobbold. It is named after Isaac Lord, a local businessman who bought the waterfront site from the brewing family in 1900 and whose business interests included corn and coal. The buildings date from early 15C to late 18C, reflecting the site's commercial and industrial use over four centuries. This interesting conversion of an interesting building has created several bars on different levels with a courtyard to the side. The design is stylish, thoughtful and contemporary resulting in a location that has something for everyone. It is open from early morning until late serving meals and real ale.



Isaacs counter

St. Peter's Hall ★

Dating from C15, if not earlier, this Grade II*-listed medieval hall complete with a moat was converted into a pub by St Peter's Brewery. There is lots of architectural interest. The interior is mainly from the C17 & C18 with good use of architectural salvage materials. The brewery is across the courtyard in agricultural buildings. Meals and ales provided. The pub itself is closed all day on Mondays and Tuesdays and in the evenings - check before visiting.



Sweffling

Low Rd (B1119), , Sweffling, IP17 2BB

Tel: (01728) 664178

Email: swefflingwhitehorse@gmail.com

Website: <http://www.swefflingwhitehorse.co.uk>

White Horse ★

A characterful, cosy, two-room pub which could fool the unwary into thinking it is ancient. There is no bar counter, the beer is stillaged in a small alcove off the tap room. The public bar has a quarry tiled floor, a range cooker, bar billiards, a piano and the only game of ?Ring The Hartebeest? in the country, using a hartebeest horn from South Africa. The lounge is small with a wood-burning stove, a high-backed settle, pew seating and a large scrubbed table. The pub focuses on green issues - renewable energy, recycling, local suppliers, Fairtrade and organic produce. Real ales and snacks. Closed Tuesdays, Wednesdays and Thursdays. Open evenings only except Sunday lunchtime.



Surrey

Gomshall

52 Station Road, , Gomshall, GU5 9LB

Directions: on A25 westbound

Tel: (01483) 340231

Email: bookings@gomshallmill.co.uk

Website: <https://gomshallmill.co.uk>

Gomshall Mill ★

Spanning the river, this beautiful Grade II-listed timber-framed mill dates to the C17, although an earlier mill was mentioned in the Domesday Book. Originally a flour mill, its restored waterwheel is a central feature of the restaurant. Other original elements are well integrated. The comfortable bar features an inglenook fireplace. Real ales and ciders and meals.



Tayside

Broughty Ferry

285 Brook Street, , Broughty Ferry, DD5 2DS

Tel: (01382) 779741

Email: speedwellinns@aol.com

Website: <https://the-royal-arch.co.uk/>

Dundee

4 Nethergate, , Dundee, DD1 4ET

Tel: (01382) 229494

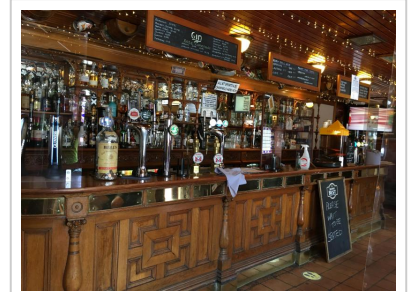
Email: 4380@greeneking.co.uk

Website: <https://www.belhavenpubs.co.uk/pubs/angus/trades-house/>

Listed Status: B

Royal Arch ★

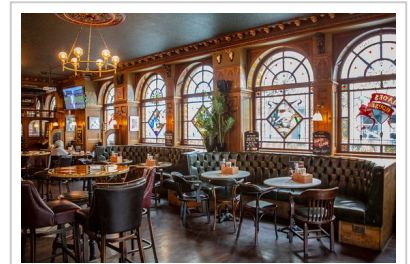
This restored pub has bar fittings from an old demolished pub. It has an oak gantry that is late Victorian. There are good stained-glass windows in the Art Deco lounge, which is located in the former stables.



Bar

Trades House Bar ★

This feels like an old pub due to the wonderful wood and glass craftsmanship of the fittings, as well as stained-glass windows representing the nine trades of the city. It is Grade B-listed.



Tyne & Wear

Newcastle upon Tyne

Central Station, Neville Street, City Centre, Newcastle upon Tyne, NE1 5DG
Tel: (0191) 261 6611

Newcastle upon Tyne

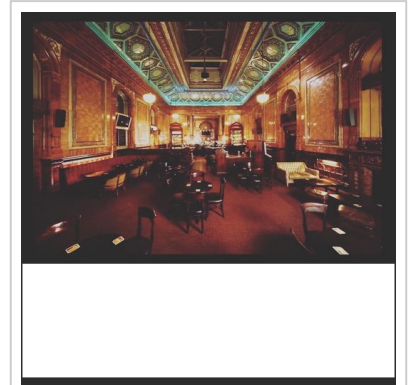
48, Westgate Road, City Centre, Newcastle upon Tyne, NE1 1TT
Tel: (0191) 261 5718

South Shields

9 Claypath Lane, , South Shields, NE33 4PG
Directions: Off Westoe Road
Tel: (0191) 447 7190

Centurion ★

Created in 1893 as Newcastle Central Station's first class waiting lounge and refreshment room and Grade 1 listed. The sumptuous decoration includes walls and columns clad with full-height faience by Burmantofts of Leeds. After several years of misuse as storage facilities, it was reopened as a bar in 2002. It has lost a previous ceramic bar counter but retains a tile-clad skylight, terrazzo floor and marble and tiled fireplace. There is also a small snug. Meals are served and a range of real ales and ciders.



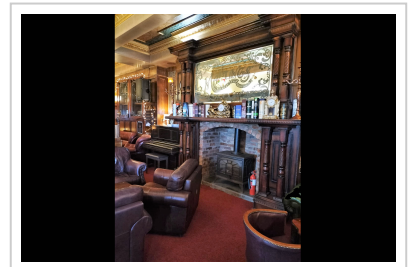
interior

Liberty House ★

Built in 1874 in French Renaissance style as the Union Club and now a large, multi-floored, multi-roomed pub in a Grade II-listed building. The centre of the pub is crowned by a huge glass dome and there is a grand stone staircase,. After recent renovation, old rooms including a snug remain. There are also tall stained-glass windows, ornate plasterwork and fireplaces to be enjoyed. Real ales and meals.

Maltings ★

Jarrow Brewery bought the former Co-op dairy to house their brewery on the ground floor with the brewery tap on the first floor. An impressive wood-panelled staircase leads to The Maltings on the first floor which has a partitioned room with a large central bar that boasts good quality fittings. It manages to retain the feel of an old brewery and to honour its past. Closed on Mondays and Tuesdays and on Wednesday and Thursday lunchtimes. The bar serves real ale but not food. The ground floor is separate and does not serve real ale.



Sunderland

145 High Street West, , Sunderland, SR1 1UW

Tel: None

Listed Status: II

Sunderland

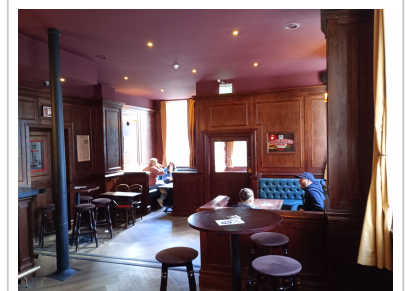
26 Silksworth Row, City Centre, Sunderland, SR1 3QJ

Tel: (0191) 567 3720

Website: <http://www.theshipisis.uk/>

Bridge Hotel Vaults ★

This Grade II listed building was the home of a prosperous family. In 1796 it was converted into a coaching inn but had a period of closure and other uses before being turned into a pub again in 2024. The single room bar on the ground floor is pleasingly unfussy, with wood panelling and a simple bar that has a foot rail. The dark ceiling and lack of distractions help to create a cosy atmosphere. There is a nod to the city's brewing past with mirrors from Vaux Brewery. Outside is old tiling announcing 'Wholesale and Retail Wine And Spirit Store' and 'Billiards'. Open Thursday to Sunday only, serving real ales and ciders but not food.



Bridge Hotel Vaults (6)

Ship Isis ★

Built 1885, a Grade II-listed building that was extensively remodelled by Scottish & Newcastle in 1986 before a short closure until rescued by Jarrow Brewery in 2011. They thoughtfully restored it back to its Victorian splendour and created a long narrow public bar on the right with impressive bar fittings; on the left is a wood-panelled lounge and there is additional seating for the weekends upstairs. The overall effect of the restoration is spectacular.



Public Bar

West Midlands

Birmingham

116 Colmore Row, City Centre, Birmingham, B3 3BD
Tel: (0121) 238 1041
Email: info@colmoretap.co.uk
Website: <http://www.colmoretap.co.uk/>

Birmingham

33 Bennetts Hill, City Centre, Birmingham, B2 5SN
Tel: (0121) 695 1131
Website: <https://cosyclub.co.uk/location/birmingham/>

Birmingham

4 Temple Row West, City Centre, Birmingham, B2 5NY
Directions: Opp St Philip's Cathedral
Tel: (0121) 200 1892
Email: oldjointstock@fullers.co.uk
Website: <https://www.oldjointstock.co.uk/>
Listed Status: II

Colmore ★

Thornbridge joined with Pivovar to convert an early C20 building in Edwardian Baroque style that was latterly a bank. Grade II listed, it has a marble frieze and a ceiling with green brick-shaped tiles below, three-quarter height panelling and ceiling brackets. Full height glazed screens form two separate rooms. The conversion had been done with care and class, including quality bar fittings.



Cosy Club ★

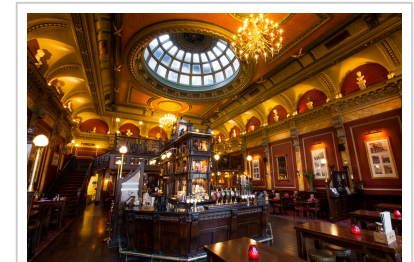
This Grade II-listed former bank, with its high vaulted ceilings, has light flooding in that shows off the impressive space and lets it breathe. The building itself is in stone with giant Corinthian columns. The interior banking hall has a high compartmented ceiling held up by a number of fluted Corinthian columns and a mezzanine floor beyond the servery. One former office has a tiled dado and an ornate ceiling; another has full-height fielded panelling.



Cosy Club exterior

Old Joint Stock ★

A Fuller's conversion of a Grade II-listed bank built in 1862 with a spectacular Italianate interior dominated by a high ceiling with a huge domed skylight. The pub use is well integrated and includes a magnificent tall carved wooden island bar with a four-sided clock. The manager's office is used as a small function room. There is a theatre attached.



Bar

Dudley

Black Country Living Museum, , Dudley, DY1 4AL

Tel: (0121) 557 9643

Email: info@bclm.com

Website: <https://bclm.com>

Bottle & Glass ★

Originally located in Brierley Hill, this pub was moved brick-by-brick to the museum. It is a wonderful re-creation of a Victorian era pub. It is open only at lunchtimes during museum hours.



Main bar

West Yorkshire

Brighouse

Bethel Street, , Brighouse, HD6 1JN

Tel: (01484) 401756

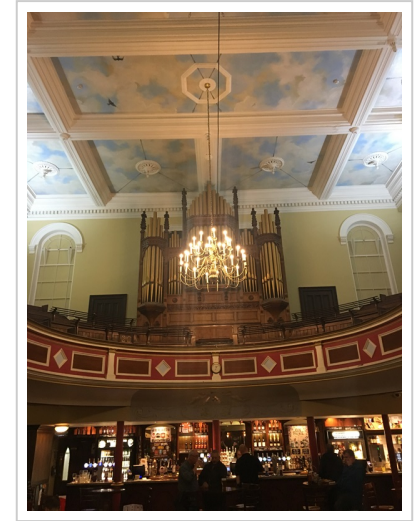
Email: p937@jdwwetherspoon.co.uk

Website: <http://www.jdwetherspoon.co.uk/home/pubs/the-richard-oastler>

Listed Status: II

Richard Oastler ★

This Wetherspoon's is an interesting conversion of a Methodist chapel built in 1878. The pub has since been extended into a later annex. The main bar is lit by two chandeliers hanging from an intriguingly decorated ceiling. Organ pipes, pews and even hymn book numbers can still be seen on the upper floor.



Dewsbury

Dewsbury Railway Station, Wellington Road, , Dewsbury, WF13 1HF

Tel: (01924) 459193

Email: westriding@beerhouses.co.uk

Website: <https://beerhouses.co.uk/the-west-riding/>

West Riding Refreshment Rooms ★

The Grade II-listed former waiting rooms on Dewsbury station were converted to a pub in 1994, a pub that has gone on to win multiple awards. It has plenty of character, creating a classic pub feel, with dark wood furnishings and railway-themed decor.



Heckmondwike

New North Road, , Heckmondwike, WF16 9DP

Directions: off A62 on B6117

Tel: (01924) 404774

Old Hall ★

Parts were built in 1472 as a timber structure, this Grade II*-listed building is one of only four remaining aisled manor houses in the country. Original timbers remain in the minstrels' gallery. The main hall has a plaster ceiling dating from 1640. Once the home of C18 scientist Joseph Priestley who discovered oxygen and invented carbonated water. The old building is impressively integrated with the current day pub use. There is real ale. Meals are served on Sunday lunchtimes only.



Leeds

Angel Inn Yard, City Centre, Leeds, LS1 6LN

Tel: (0113) 245 1428

Angel Inn ★

This Sam Smiths pub is a recreation of a traditional Leeds 'yard' pub that has two bare-floored downstairs rooms and an upstairs lounge with a separate bar (not always open). With good quality woodwork throughout, it looks authentic, supported by simple but attractive fixtures and fittings, a muted colour scheme and a handsome servery. There is bench seating and a fireplace with cast iron fittings. Old maps and photographs on the walls help to create a good environment for a civilised pint. There is real ale but no food.

Angel Inn courtyard

Image not found or type unknown

Angel Inn courtyard

Leeds

29 Boar Lane, City Centre, Leeds, LS1 5DA

Tel: (0113) 440 7998

Email: info@bankerscat.co.uk

Website: <http://www.bankerscat.co.uk>

Leeds

Headingley Lane, Headingley, Leeds, LS6 1BL

Tel: (0113) 278 8521

Website: <https://www.jdwetherspoon.com/pubs/all-pubs/england/west-yorkshire/the-golden-beam>

Listed Status: II

Leeds

12 Bridge Road, Kirkstall, Leeds, LS5 3BW

Tel: (0113) 278 4044

Email: info@kirkstallbridge.co.uk

Website: <http://www.kirkstallbridge.co.uk>

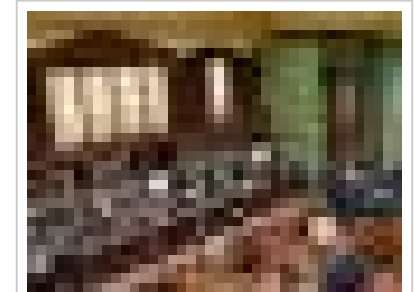
Bankers Cat ★

An impressive Thornbridge bar opened in 2019. There is much to admire in the island bar counter, lots of wood panelling and several small seating areas. To the right is a lovely stained-glass window which is an exciting and unexpected touch. There is even a small library. Downstairs additional seating is in the old bank vaults, including in the former safe. The bar serves a range of real ales, no food.



Golden Beam ★

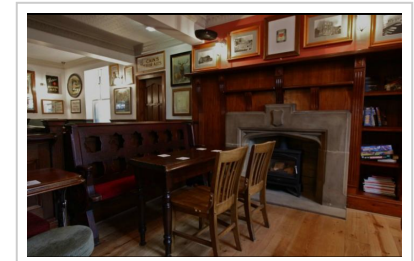
This Wetherspoon's occupies an impressive Grade II-listed Portland stone building in quasi-Egyptian/Classical style, dating from 1934. It was originally a church and Sunday school and later a theatre and concert hall. The striking split-level main bar is in the cavernous former auditorium which has a very high ceiling and a huge glass panel at the far end. There are also a vestibule seating area, a snug, a side room and, upstairs, an L-shaped bar that overlooks the auditorium. The pub displays much specially-commissioned artwork and the ornate church organ has been repurposed as a feature fireplace. It is named after a painting by locally born artist John Atkinson Grimshaw and serves real ales and meals.



Golden Beam main bar

Kirkstall Bridge Inn ★

This pub is a museum of breweriana and a well-done recreation of a Victorian interior by Kirkstall Brewery. There are two floors and an extensive riverside garden. There are real ales and meals.



Leeds

28 Great George Street, City Centre, Leeds, LS1 3DL

Directions: Behind Town Hall

Tel: None

Listed Status: II

Luddendenfoot

Luddenden Lane, , Luddendenfoot, HX2 6NW

Tel: (01422) 882222

Email: hello@kershawhouse.co.uk

Website: <https://www.kershawhouse.co.uk>

Listed Status: I

Netherton

211 Netherton Lane, , Netherton, WF4 4HJ

Directions: left turn up hill from A 642 at Horbury Bridge, don't confuse this Netherton with Netherton by Huddersfield

Tel: (01924) 274496

Victoria Family & Commercial Hotel ★

A first-rate re-creation of a Victorian interior with high-quality fittings. Built in 1865 as an hotel, the building has an impressive Victorian exterior and ornate interior with high ceilings. There is a long main bar and two rooms which feature an array of polished wood and shiny brass meaning there is lots to enjoy. A selection of ales, ciders and meals. Grade II-listed. (PUB CURRENTLY CLOSED)



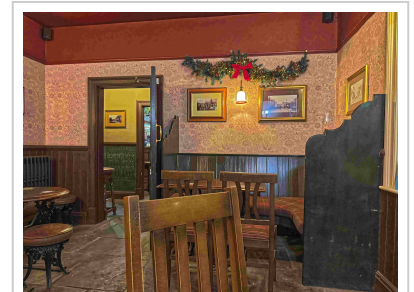
Kershaw House ★

A magnificent mansion house built 1650, recorded in the stonework above the door. It was converted to a pub in 1965. It is Grade I-listed. There are five rooms including two lounges with large mullion windows. One has a massive inglenook fireplace with superb stonework, as well as timber posts and heavy beams. Other items of note are a mural of the house and a billiard room. Real ales and meals.



Star Inn ★

An old village local whose previously opened-up interior has been refurbished, in the process restoring a layout of a passage from front door to the rear with a door for staff that doubles as a serving hatch and four separate rooms. The pub has a stone-flagged floor, an attractive counter and impressive fireplaces, one with a cast-iron range. It is again a traditional pub, in classic Sam Smiths style and quality. The pub serves real ale but not meals.



Star Inn bar 3

Otley

2 Westgate, , Otley, LS21 3AS

Tel: (01943) 465950

Email: hello@theblackhorseotley.co.uk

Website: <https://www.blackhorseotley.co.uk>

Black Horse ★

An imposing street-corner coaching inn with a Victorian-style interior. Extensively refurbished in the 90s adding a fine counter and bar-back. Reopened as a joint venture by Kirkstall Brewery and Brudenell Social Club. They have done a fantastic job carefully preserving some of the original splendid ceiling, wall tiling, floor tiling and a big old fireplace. The ornate wooden main bar has been opened out and there is a long, narrow space with three drinking areas with brewery mirrors and a bare-brick finish. A superb outdoor drinking area occupies the former stable yard. There are meals and real ales and accommodation is available.

bar

Image not found or type unknown

bar

Wiltshire

Dauntsey Lock

, , Dauntsey Lock, SN15 4HD

Directions: On the B4069 below Lyneham Bank which is closed long-term. Approach from Chippenham/ Christian Malford direction or via narrow lane from Bradenstoke.

Tel: None

Email: info@thepeterborough-arms.co.uk

Listed Status: II

Swindon

Peglars Way, Wichelstowe, Swindon, SN1 7DA

Directions: Opposite side of the canal to Waitrose

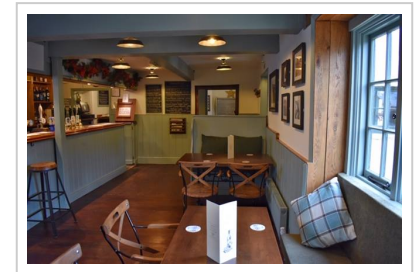
Tel: (01793) 209207

Email: wichelstowe@hall-woodhouse.co.uk

Website: <https://www.hall-woodhousewichelstowe.co.uk>

Peterborough Arms ★

The CAMRA Design Award 2020 for Refurbishment recognised this pub as splendid resurrection of a long-closed and near-derelict pub. It was bought in 2014 by the Wilts and Berks Canal Trust and restored by volunteers, who are also working on restoration of the canal. A visitor centre and beer garden are due to be completed. The virtues of a traditional canal pub still come through. It makes for an agreeable setting for a drink and reflection on the heroic efforts that have been put in.



Hall & Woodhouse ★

A spectacular winner of CAMRA's New Build Award. The first thing to notice at this new canalside pub is the narrowboat projecting through the window. Inside this creates several cosy seating areas. The seating area wraps around the bar. To the left is the above-ground cellar and dining area with open kitchen. There is space for drinking alongside the canal and plenty of canal memorabilia. Overall this is an imaginative, original and interesting place. it serves real ales and meals.

Bar

Image not found or type unknown

Bar

Worcestershire

Kidderminster

40 Park Lane, , Kidderminster, DY11 6TG

Directions: canal-side opp the main Tesco store

Tel: (01562) 742305

Email: theweaversparklane@yahoo.com

Listed Status: II

Weavers at Park Lane ★

This canalside house was built in the 1840s and is Grade II-listed. It was converted to a pub in 2015. It has the feel of a traditional pub having a multi-roomed interior. The servery is in a small red-tiled room at the rear. The beer garden overlooks the canal. It serves a wide range of real ales and ciders and bar snacks.



Worcester

61 Broad Street, , Worcester, WR1 3LY

Tel: None

Email: worcester@cockyanchor.co.uk

Website: <https://www.cockyanchor.co.uk/worcester>

Cocky Anchor ★

This is a Georgian five-storey Grade II*-listed building that dates from 1740. There are quirks and imagination in its conversion, with a lot done in a small space. The interesting interior features arched windows and doors and covers a couple of floors displaying a naval theme and artefacts on the ceilings and walls. There is lots of wood panelling, a snug, an impressive meeting room and a cupola room upstairs leading to a rooftop area with panoramic views of Worcester. An attractive covered yard is to the rear. There is real ale but no meals are served.

cocky anchor bar

Image not found or type unknown

cocky anchor bar

Worcester

29 New Street, , Worcester, WR1 2DP

Tel: (01905) 726100

Email: info@thekingcharleshouse.co.uk

Website: <https://www.thekingcharleshouse.co.uk/>

Listed Status: II

Worcester

The Cross, , Worcester, WR1 3PY

Tel: (01905) 729211

Email: slugandlettuce.worcester@stonegatepubs.com

Website: <https://www.slugandlettuce.co.uk/worcester>

Listed Status: II

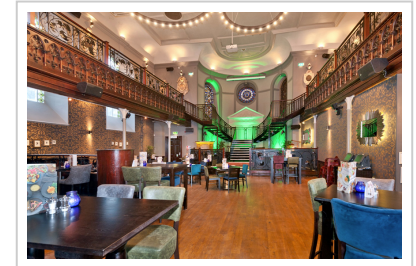
King Charles II ★

King Charles is believed to have fled from this house after defeat at the Battle of Worcester in 1651, the final battle of the English Civil War. The residents held off Cromwell's army so that he could make his escape. A black and white, timbered building in the heart of the city, it has a stunning interior on two floors featuring oak-clad walls, fireplaces and even a dungeon. It is Grade II*-listed. The building has had various uses over the years, including as a judge's residence, a furniture-makers, an antiques shop and a restaurant. It still serves meals, as well as real ales and ciders.



Slug & Lettuce ★

A large modern bar that was a church and retains most of the architectural features of its former life, and as a result has a Grade II* listing. Meals are served but there is no real ale.



Closed Pubs

The following pubs would have been main entries in this guide had they currently been open

Cambridgeshire

Peterborough

Westgate, Peterborough, PE1 1QA

Tel: (01733) 348839

Listed Status: II

Wortley Almshouses ★

Built in 1744 as a workhouse, then rebuilt and converted into almshouses in 1837. Its Grade II listing saved it from demolition for the Queensgate development and it became a one-roomed pub in 1981. In 2003 Samuel Smiths converted it into six small rooms. The fine melding of old fabric with new fittings helped it to win a CAMRA Best Refurbishment Award. There are two bar areas, two snugs and two reception rooms with real fires. The pub serves meals but not real ale.



Cheshire

Chester

Lower Bridge Street, Chester, CH1 1RS

Directions: Enter text here...

Tel: (01244) 342060

Listed Status: I

Falcon ★

The Falcon is a striking half-timbered late-medieval building in the town centre that is the surviving half of a C12 town house for an aristocratic family. The two-roomed back bar has a stairway up to a function room. In the C19 it was an inn and cocoa house, one of five operated by Chester Cocoa Tavern Company. Extensive but sensitive restoration and installation of bar fittings were carried out before reopening in 1982. Of note are the large stone piers and a late-medieval timber partition in the front bar which are the remnants of an elevated row similar to those still seen in Chester's main streets.



Cumbria

Carlisle

Carlisle Citadel Station, Court Square, Carlisle, CA1 1QZ
Tel: (01228) 593301

301 Miles From London ★

Situated on Carlisle Citadel railway station and taking its name from its claimed distance from the capital, this former first class waiting room was built in 1848 and is Grade II listed. The cavernous room has had a number of functions including being the station buffet in the 1950s. Much of the fabric of the old building is retained, notably the high vaulted ceiling, which is a magnificent hammerbeam roof. From the platform there is the original wooden entrance lobby and at each end are mighty carved-stone fireplaces in Tudor style. There is a beautiful mahogany bar and a good quality bar back, their position matching where the former refreshment counter was positioned.

Devon

Churston Ferrers

Church Road, Churston Ferrers, TQ5 0JE

Tel: (01803) 842186

Email: churstoncourthotel@gmail.com

Website: <http://www.churstonmanor.co.uk>

Listed Status: I

Churston Manor ★

Previously Lord Churston's manor house, this 16th-century Grade II*-listed building has been carefully restored by Peter Malkin into a hotel, restaurant and pub with up to nine rooms for drinking or for dining. Oak beams and panelling, oil portraits and suits of armour give the place its true flavour. There are extensive gardens.



external

Greater London South East

Forest Hill

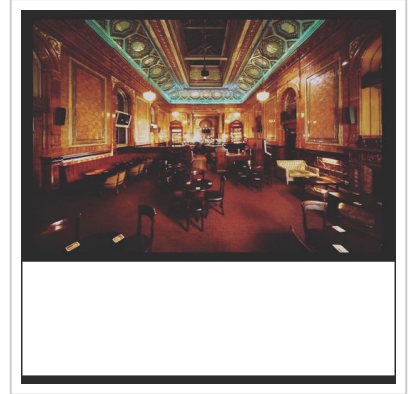
11-21 London Road, Forest Hill, SE23 3TW

Tel: (020) 8291 8920

Listed Status: II

Capitol ★

Close to the Horniman Museum, this spacious Wetherspoon's occupies a converted 1929 Art Deco cinema, the only surviving complete cinema building by noted architect John Stanley Beard. An impressive frontage opens into a cavernous interior on a number of levels. Tours of the circle and other normally unseen areas are offered by arrangement. There is seating on three levels and a long bar across the former stage. A wide range of real ales and ciders is on offer and meals are served.



Greater Manchester

Lower Kersal

7 Littleton Road, Lower Kersal, M7 3SE

Directions: Adjacent River Irwell

Tel: (0161) 792 4191

Rochdale

Ground Floor, 2 The Esplanade, Rochdale, OL16 1AE

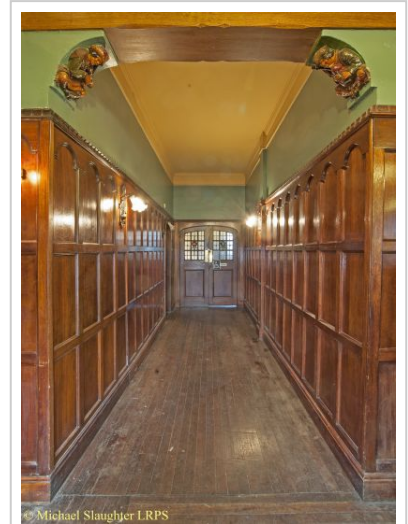
Tel: (01706) 869828

Email: info@themedicinetap.co.uk

Website: <http://www.themedicinetap.co.uk>

Racecourse ★

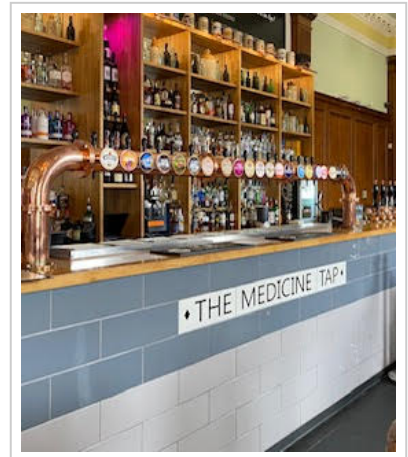
A huge brewers Tudor pub built in 1930 to serve the long-gone Manchester Racecourse. Now a Sam Smiths pub with a wonderful interior, it retains most of its original layout of rooms off a long hall. Lobbies have tiled walls and the main entrance has a revolving door. Some fixed seating, the extensive panelling and tiles in the toilets are original. Bar fittings and fireplaces are replacements. The large public bar has one of the largest island counters in the country, which is a replacement, and a large skylight. At the end of a wide wood-panelled passage is the vault with old bench seating. A small wood-panelled room at the rear has original seating. There is delightful stained glass in many windows. The gents' has its six original Doulton urinals. The pub won the CAMRA refurbishment award in 2005. No real ale or meals.



Passage

Medicine Tap ★

An imaginative conversion of a Grade II-listed building which was the central post office. It has been lovingly renovated by Mighty Medicine brewery to retain its historic character and charm. A range of ales and ciders and of pub food.



Stockport

12 Little Underbank, Stockport, SK1 1JT
Directions: under the Market Place bridge
Tel: (0161) 480 0725

Queens Head ★

Established in late C18 as Turners Vaults Wine Merchants, this small pub was built into Underbank bridge in 1868. It was remodelled about 1930 into the present three-room layout. In the 1990s Sam Smiths removed the corridor to enlarge the bar and replaced bar fittings with care so that the pub retains its authentic ambience with a front narrow bar including alcoves and grandfather clock, a snug tucked in the middle with a stove and a more comfortable room at the back. The decor includes plenty of wooden panels and wood flooring, on the walls are pictures, old advertisements and mirrors. There are two rare sets of cocks on the top of the bar counter for dispensing spirits stored in casks above. There is real ale but not meals.



Herefordshire

Bringsty Common

, Bringsty Common, WR6 5UW

Directions: Off A44; at cat & mouse sign follow right-hand track down onto common

Tel: (01886) 821462

Email: liveandletlive@tiscali.co.uk

Website: <http://www.liveandletlive-bringsty.co.uk>

Listed Status: II

Live & Let Live ★

Saved from conversion into a house following a long campaign by locals has resulted in a renovation creating a thatched, multi-roomed pub on two floors, done very well. The owners have transformed this isolated Grade II-listed ex-cider house. It features exquisite exposed timbers, flagstone floors, a fine fireplace and numerous oak settles.



Main Bar

Lancashire

Burnley

319 Padiham Road, Burnley, BB12 6PR
Tel: (01282) 424165

Tim Bobbin Hotel ★

Named after a Lancashire dialect poet, this pub is one of Sam Smith's best restorations, turning an open plan building into a multi-room, old-fashioned pub with a comfortable lounge and separate games room. It was a winner in CAMRA's Pub Design Awards.



Loch Lomond, Stirling & The Trossachs

Grangemouth

50 Bo'ness Road, Grangemouth, FK3 8AF
Tel: (01324) 227468

Earl of Zetland ★

This pub is in a church originally named the Zetland Free Church after its patron when it was built in late 1800s. The excellent conversion allows features such as the organ pipes and stained-glass windows to be admired. The pub serves real ales and ciders and meals.



interior

Norfolk

King's Lynn

37-41 Chapel Street, King's Lynn, PE30 1EG

Tel: (01553) 451566

Email: enquiries@the-lattice-house.co.uk

Lattice House ★

A brick and black timber-framed merchant's house, built around 1480 that is Grade II*-listed. It became a pub in 1980 and has since been smartened for dining, retaining old features. There is a small bar and seating at the front, to the rear it opens up with an impressive high beamed roof and large inglenook fireplace. The minstrels' gallery has become a mezzanine overlooking the bar. There are meals (not Mondays) and real ale.

Staffordshire

Burton upon Trent

Manor Drive, Burton upon Trent, DE14 3RW

Directions: 100m east of High Street, between Market Place and Burton College.

Tel: (01283) 568170

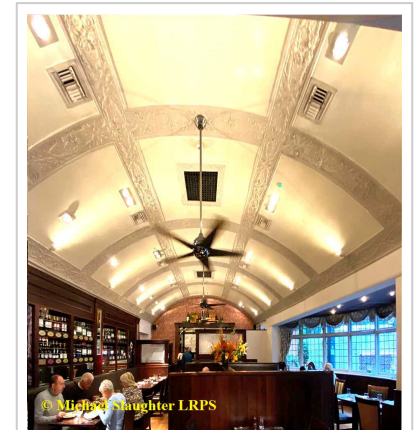
Email: info@thewineryburton.co.uk

Website: <https://www.thewineryburton.co.uk/>

Listed Status: II*

Winery ★

The Winery is situated on the ground floor of an attractive Victorian building that incorporates parts of the C13 Burton Abbey infirmary as it is located on the site of the Benedictine Burton Abbey, where the first wells were sunk and monks started brewing beer. This Grade II*-listed house with mock Tudor frontage became the Burton Abbey Club in 1910 and was converted to a pub in 1975, becoming The Winery restaurant in 2008 with a bar that is in the former snooker room and three function rooms. All are well furnished with comfortable seating and stylish decoration. The entrance hall has a mosaic floor and off a passage are rooms including one with an ornate cornice and ceiling bosses. The bar room has a barrel-shaped ceiling with decorative plasterwork. Beyond this is the restaurant, which also has a vaulted ceiling and decorative plasterwork.



Winery bar and tables

Leek

Shoobridge Mill, Haywood Street, Leek, ST13 5JZ

Directions: Opposite ALDI superstore

Tel: (01538) 381550

Email: bookings@theoldmillsmokehouse.co.uk

Website: <https://www.theoldmillsmokehouse.co.uk/>

Old Mill Smokehouse ★

Pub in part of a Grade II-listed textile mill in 'industrial chic' style over two floors. The conversion shows original Victorian brickwork with much of the furniture made from scaffolding poles and planks. The first floor is for dining with an open kitchen. It's an interesting venue which impressed judges of CAMRA's pub design awards. Real ales and ciders. Meals are served but the pub is only open at lunchtimes from Friday to Saturday.



West Yorkshire

Gildersome

Church Street, Gildersome, LS27 7AE
Tel: (0113) 253 4821

New Inn ★

The pub dates from 1930s and has a separate bar and lounge and two further rooms, including a snug. Fittings and layout are from a Sam Smith's refurbishment in 1990s that recreated the pub in its Art Deco style, although the gents toilets are still those from the original building. The refit includes a number of Art Deco features such as mirrors, parquet flooring, wood surround fireplace with tiled interior and fixed seating. One of the rooms has a small cast iron fireplace. There is a large garden behind. The pub serves real ale and some food.



Exterior

